

PRODUCT REFERENCE GUIDE

a•pex

1. The highest point; the vertex or summit.
2. The point of culmination.
3. The pinnacle of achievement.

APEX

The Stunning New Control Platform From RTI



CH7

Wired Control



T2x

Wireless Control



RD-8x

Distributed Audio

Table Of Contents

General Information 3

Wireless Control Interfaces 4

Wired Control Interfaces & Accessories 8

Software Control Interfaces (Apps) 14

Control Processors 16

Audio Distribution 18

Laser Shark Custom Engraving..... 22

Accessories 23

Application Diagrams & Notes..... 28

SURFiR® Companion Remote

The SURFiR companion remote represents a revolutionary new concept in control. The remote allows users to incorporate the Apple® or Android® devices as the main graphical interface for their control system, while adding the convenience of tactile control with hard buttons, and eliminating the numerous screen swipes needed for control tasks that require frequent interaction.

Part #: 10-210483-19



Key Features

- Provides a companion remote for use with the RTIPanel and Virtual Panel apps.
- Tracks page changes to stay in sync with one or more apps.
- Select between 433MHz (one-way) and 2.4GHz (two-way) operation.
- Remote finder wakes up SURFiR and emits loud beeps (must use Zigbee®).
- Includes eight buttons that can be custom labeled.
- Works with any XP series control processor.
- Battery low indicator.
- Uses 4 AAA batteries.

Installation Notes

- Does NOT have infrared control capability.
- Requires XP series control processor.
- Requires an RM-433 antenna, ZM-24 2.4 GHz transceiver module or an RTI control processor with an integrated antenna.

Specifications

| | |
|-------------------------------------|---|
| Power | 4 AAA Alkaline batteries |
| Power Management | Automatic On/Off |
| Radio Frequency Control Range | Up to 100 feet (30.5 meters) |
| Radio Frequency Carrier | 802.15.4 @ 2.4Ghz (Zigbee® technology) |
| | 433MHz |
| Dimensions (L x W x D)..... | 9.5 in (240mm) x 1.8 in (46mm) x .8 in (22mm) |
| Enclosure..... | High-impact molded ABS plastic |
| Weight | 8.0 oz. (228g) with batteries |
| Warranty | One Year (Parts & Labor) |

T1-B+ Remote

The T1-B+ is the third generation of RTI's popular T1 universal system controller, now featuring the RTI dual RF platform. The T1-B+ allows all other factory remote controls to be combined into one simple, ergonomic user interface providing powerful one-handed system control.

Part #: 10-210503-12



Key Features

- Dual RF transmission capability uses 433MHz and 2.4GHz (utilizing Zigbee technology).
- Comfortable ergonomic design permits effortless, one-handed operation.
- Eight source and four general purpose assignable/programmable keypad buttons with interchangeable key caps.
- Forty assignable/programmable keypad buttons.
- Capable of transmitting IR and RF from a single button press.
- Completely customizable and programmable.
- Optional modules/processors for voltage sensing (to monitor power status of equipment) and RS-232 control.
- System includes a Lithium-Ion Battery and a docking station.
- USB Programming.

Installation Notes

- RF control requires an RM-433 433MHz antenna, ZM-24 2.4GHz transceiver module and an RTI control processor, or an RTI control processor with an integrated antenna.

Specifications

| | |
|---|---|
| Power | 3.6 VDC, 850 mAh Lithium-Ion Battery Pack |
| Power Management | Automatic On/Off (tilt switch) |
| Infrared Control Range | 30 feet (9.1 meters) @ 60 degrees |
| Infrared Frequency Transmission Range | 15kHz - 460kHz |
| Radio Frequency Control Range | Up to 100 feet (30.5 meters) |
| Radio Frequency Carrier | 802.15.4 @ 2.4Ghz (Zigbee technology) |
| | 433MHz |
| Battery Charge Time..... | 3-4 Hours |
| Communications..... | USB programming port |
| Dimensions (L x W x D)..... | 10.0 in (254mm) x 1.9 in (48mm) x .9 in (23mm) |
| Enclosure..... | High-impact molded ABS plastic |
| Weight | 7 oz. (200g) with battery pack |
| Warranty | One Year (Parts & Labor) / 90 days on the battery |

T2-Cs+ Remote

The second generation of the T2-Cs comes equipped for the modern media room. A remote control that can do it all - provide reliable control of the entire system while remaining easy to use, including two-way feedback from supported devices.

Part #: 10-210447-19



Key Features

- Dual RF transmission capability uses 433MHz and 2.4GHz (utilizing Zigbee technology).
- Two-way feedback from compatible devices using 2.4GHz (Zigbee).
- Comfortable ergonomic design permits effortless, one-handed operation.
- Full color TFT LCD to display custom buttons, text and graphics.
- Thirty-seven assignable/programmable keypad buttons.
- Three-way rocker switch for scrolling list navigation.
- Capable of transmitting IR and RF from a single button press.
- Completely customizable and programmable.
- System includes a Lithium-Ion Battery and a docking station.
- USB Programming.

Installation Notes

- RF control requires an RM-433 433MHz antenna, ZM-24 2.4GHz transceiver module and an RTI control processor, or an RTI control processor with an integrated antenna.

Specifications

| | |
|---|---|
| Power | 3.6 VDC, 1200 mAh Lithium-Ion Battery Pack |
| Power Management | Automatic On/Off (tilt switch) |
| Infrared Control Range | 30 feet (9.1 meters) @ 60 degrees |
| Infrared Frequency Transmission Range | 15kHz - 460kHz |
| Radio Frequency Control Range | Up to 100 feet (30.5 meters) |
| Radio Frequency Carrier | 802.15.4 @ 2.4GHz (Zigbee technology) |
| Touchscreen Display | 2.4 in (61mm) diagonal, high-brightness color TFT LCD |
| | 1/4 VGA (240x320 pixels) with 65K colors |
| Battery Charge Time | 3-4 Hours |
| Dimensions (L x W x D) | 9.75 in (248mm) x 2.5 in (64mm) x 1.0 in (25mm) |
| Weight | 9 oz. (255g) with battery pack |
| Warranty | One Year (Parts & Labor) / 90 days on the battery |

T2i Remote

The sleek, ergonomic design of the T2i is combined with cutting edge technologies to provide the powerful control capabilities needed in today's automated home. The T2i control interface is completely customizable for easy, intuitive control, even displaying feedback from supported electronics on it's 2.8" edge-to-edge color touchscreen.

Part #: 10-210505-14



Key Features

- Dual RF capability uses 433MHz and 2.4GHz (utilizing Zigbee technology).
- Two-way control using 2.4GHz (Zigbee) and RTI control components.
- Flush mount, edge-to-edge touchscreen for improved gesture support.
- Accelerometer provides instant-on control.
- Forty-seven assignable/programmable keypad buttons.
- Cursor button allows simple scrolling list navigation.
- System includes a Lithium-Ion battery and docking station.
- Completely customizable and programmable.
- USB Programming.

Installation Notes

- RF control requires an RM-433 433MHz antenna, ZM-24 2.4GHz transceiver module and an RTI control processor, or an RTI control processor with an integrated antenna.

Specifications

| | |
|---|---|
| Power | 3.6 VDC, 1800 mAh Lithium-Ion Battery Pack |
| Power Management | Automatic On/Off (accelerometer) |
| Infrared Control Range | 30 feet (9.1 meters) @ 60 degrees |
| Infrared Frequency Transmission Range | 15kHz - 460kHz |
| Radio Frequency Control Range | Up to 100 feet (30.5 meters) |
| Radio Frequency Carrier | 802.15.4 @ 2.4GHz (Zigbee Wireless Mesh Networking) |
| Touchscreen Display | 2.8 in (71mm) diagonal, High-brightness color TFT LCD |
| | 1/4 VGA (240x320 pixels) with 64K colors |
| Battery Charge Time | 3-4 Hours |
| Communications | USB 2.0 programming port |
| Dimensions (L x W x D) | 10.0" (254mm) x 2.3" (58mm) x 0.7" (20mm) |
| Weight | 8.3 oz. (236g) with battery pack |
| Warranty | One Year (Parts & Labor) / 90 days on the battery |

T2x Remote

The remarkable T2x is the fifth generation of RTI's renowned T2 remote control platform. The 2.8" color display delivers vivid custom graphics, including two-way feedback with album art, while the perfect selection of soft-touch buttons provide quick access to common tasks. The T2x also features groundbreaking innovations such as grip sensors and an accelerometer for instant-on control, an edge-to-edge touchscreen allows improved gesture control, WiFi®, and more!

Part #: 10-210504-13



Key Features

- Dual RF capability uses 433MHz and 2.4GHz (utilizing Zigbee technology).
- Integrated 802.11b/g wireless Ethernet.
- Two-way control using 2.4GHz (Zigbee), WiFi and RTI control components.
- Flush mount, edge-to-edge touchscreen for improved gesture support.
- Integrated grip sensors keep the remote awake while in use.
- Accelerometer provides instant-on control.
- Forty-seven assignable/programmable keypad buttons.
- Cursor button allows simple scrolling list navigation.
- System includes a Lithium-Ion battery and docking station.
- Completely customizable and programmable.

Installation Notes

- RF control requires an RM-433 433MHz antenna, ZM-24 2.4GHz transceiver module and an RTI control processor, or an RTI control processor with an integrated antenna.
- WiFi connection required for album art feedback, viewing MJPEG video and remote updating (future support).

Specifications

| | |
|---|---|
| Power | 3.6 VDC, 1800 mAh Lithium-Ion Battery Pack |
| Power Management | Automatic On/Off (accelerometer) |
| Infrared Control Range | 30 feet (9.1 meters) @ 60 degrees |
| Infrared Frequency Transmission Range | 15kHz - 460kHz |
| Radio Frequency Control Range | Up to 100 feet (30.5 meters) |
| Radio Frequency Carrier | 802.15.4 @ 2.4GHz (Zigbee Wireless Mesh Networking) |
| Wireless Ethernet | 802.11b/g @ 2.4Ghz |
| Touchscreen Display | 2.8 in (71mm) diagonal, High-brightness color TFT LCD |
| | 1/4 VGA (240x320 pixels) with 64K colors |
| Battery Charge Time | 3-4 Hours |
| Communications | USB 2.0 programming port |
| Dimensions (L x W x D) | 10.0" (254mm) x 2.3" (58mm) x 0.7" (20mm) |
| Weight | 8.8 oz. (250g) with battery pack |
| Warranty | One Year (Parts & Labor) / 90 days on the battery |

T3-V+

The pinnacle of elegance, the next generation T3-V+ combines cutting-edge design and limitless customizability with a host of features, including a 3.5" LCD touchscreen with eye-popping color, wireless Ethernet with an integrated web browser and dual RF communication. Use it as a powerful standalone controller or as part of an advanced RTI system for wireless control and feedback from electronic devices such as music servers and environmental controls.

Part #: 10-210434-15



Key Features

- Dual RF capability uses 433MHz and 2.4GHz (utilizing Zigbee technology).
- Integrated 802.11b/g wireless Ethernet with improved performance.
- Two-way feedback from compatible devices using 2.4GHz (Zigbee) and RTI control accessories.
- Full VGA resolution (480x640) color TFT LCD to display custom buttons, text, graphics and animations.
- Integrated high-resolution touchscreen.
- Twenty-four programmable hard buttons, including five buttons with replaceable key caps that can be custom engraved.
- System includes a Lithium-Ion Battery and a docking station.
- USB Programming.

Installation Notes

- RF control requires an RM-433 433MHz antenna, ZM-24 2.4GHz transceiver module or an RTI control processor with an integrated antenna.
- WiFi connection required for album art feedback, viewing MJPEG video and remote updating (future support).

Specifications

| | |
|---|---|
| Power | 3.6 VDC, 1700 mAh Lithium-Polymer Battery Pack |
| Power Management | Automatic On/Off (tilt switch) |
| Infrared Control Range | 30 feet (9.1 meters) @ 60 degrees |
| Infrared Frequency Transmission Range | 15kHz - 460kHz |
| Radio Frequency Control Range | Up to 100 feet (30.5 meters) |
| Radio Frequency Carrier | 802.15.4 @ 2.4Ghz (Zigbee® technology) |
| Wireless Ethernet | 802.11g @ 2.4Ghz |
| Touchscreen Display | 3.5 in (89mm) diagonal, high-brightness color TFT LCD |
| | Full VGA (480x640 pixels) with 65K colors |
| Battery Charge Time | 3-4 Hours |
| Dimensions (L x W x D) | 7.6 in (193mm) x 3.1 in (79mm) x 1.1 in (28mm) |
| Weight | 7.4 oz. (210g) with battery pack |
| Warranty | One Year (Parts & Labor) / 90 days on the battery |

RKM-1+ Multi-Room Audio Keypad

Perfect for multi-room audio control, the RKM-1+ is designed for ease of use and affordability. It fits into a single gang electrical box and ships with white, black and light almond faceplate and interchangeable buttons, ensuring seamless integration into homes and buildings. When used together with compatible RTI control processors, the RKM-1+ can communicate bidirectionally with many popular multi-zone receivers and distributed audio systems, reflecting current source and volume level on its LED backlit lens.

Part #: 10-210492-19



Key Features

- Provides control and feedback from distributed audio systems (ex. AD-4/AD-8) and multi-zone receivers via an RTI XP control processor (XP4/XP6/XP8s only).
- Includes white, black, and light almond faceplate/buttons.
- Use any standard Decora® type wallplate.
- Fits in a single gang electrical outlet box.
- Eight selectable sources.
- Backlit volume level indicator.
- Customizable LED backlit film source indicator.
- Custom laser-etched LED films may be ordered using LaserShark.
- Open architecture allows control of virtually anything.
- IR output port drives up to 1000 feet of wire.
- Completely customizable and programmable.
- USB Programming.

Installation Notes

- Power supply not included - A separate power supply (PS16 or similar) or an RTI CB8 connecting block is required for power. Directly wiring to an RTI control processor Expansion Port is not recommended.
- Laser Shark compatible for custom engraved source lens.

Specifications

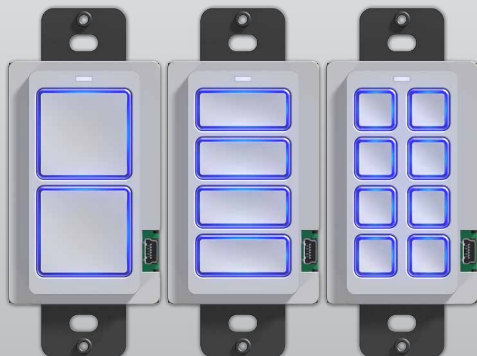
| | |
|-----------------------------------|--|
| Power | +9VDC to +16VDC, 350mA max |
| Infrared Output Port..... | 200mA output |
| | Drives up to 1000 ft (300 m) of wire |
| Operating Temperature..... | +32°F to +122°F (0°C to +50°C) |
| Operating Humidity..... | 5% to 95% Non-condensing |
| Total System Memory | 64K Bytes Flash (non-volatile) memory |
| Communications..... | USB programming port |
| Mounting..... | Mounts into single gang electrical outlet box |
| Dimensions (H x W x D) | 4.1 in (104mm) x 1.8 in (46mm) x 1.0 in (25mm) |
| Installation Cut-Out (H x W)..... | 2.8 in (71mm) x 1.8in (46mm) |
| Total Depth in Wall..... | .75 in (19mm) Plus Cables |
| Weight | 4 oz (284 g) |
| Warranty | One Year (Parts & Labor) |

RK1+ - 2, 4 & 8 Button Keypad

Sized for a single gang electrical box, the RK1 incorporates two, four or eight fully-programmable buttons which can be custom labeled with text and symbols. The backlight for each button can be configured to display almost any desired color. It provides a built-in IR control system for controlling audio/video components, lights, or other electronic systems. For expanded control capabilities including feedback, the RK1 can be used in an RTI control system.

RK1+ Part

| | | | |
|-----------------------|------------------------|------------------------|------------------------|
| White: | 2: 10-210074-15 | 4: 10-210073-14 | 8: 10-210072-13 |
| Metallic Gray: | 2: 10-210119-15 | 4: 10-210117-13 | 8: 10-210115-11 |
| Black: | 2: 10-210118-14 | 4: 10-210116-12 | 8: 10-210114-10 |



Key Features

- Use any standard Decora® type wallplate.
- Fits in a single gang electrical outlet box.
- Capable of master/slave configuration, allowing two keypads to work in conjunction.
- Three different cover plate colors available.
- Two, four or eight assignable/programmable buttons.
- User-definable backlight color.
- IR output port drives up to 1000 feet of wire.
- Completely customizable and programmable.
- Optional modules/processors for voltage sensing (to monitor power status of equipment) and two-way control.
- USB Programming.

Installation Notes

- Power supply not included - A separate power supply (PS16 or similar) or an RTI CB8 connecting block is required for power. Directly wiring to an RTI control processor Expansion Port is not recommended.
- Laser Shark compatible for custom engraved button keycaps.

Specifications

| | |
|--|--|
| Power | +9VDC to +16VDC, 350mA max |
| Backlights | RGB LED - User-definable color |
| Infrared Output Port..... | 200mA output |
| | Drives up to 1000 ft (300 m) of wire |
| Operating Temperature..... | +32°F to +122°F (0°C to +50°C) |
| Operating Humidity..... | 5% to 95% Non-condensing |
| Communications..... | USB programming port |
| Mounting..... | Mounts into single gang electrical box |
| Front Plate Dimensions (H x W) | Purchased (Decora® Type) |
| Dimensions (H x W x D) | 4.1 in (104mm) x 1.8 in (46mm) x 1.7 in (43mm) |
| Installation Cut-Out (H x W x D) | 2.8 in (71mm) x 1.8in (46mm) x 1.37 in (35mm) |
| Total Depth in Wall | 1.7 in (43mm) Plus Cables |
| Weight | 4 oz (284 g) |
| Warranty | One Year (Parts & Labor) |

KX2 In-wall Controller

The KX2 in-wall controller has a clean, sleek design with twelve programmable hard buttons and a 2.8" color touchscreen. The hard buttons and graphic interface are fully programmable using RTI's Integration Designer® software for full control of electronics throughout the building. A built-in infrared output port allows direct control or get two-way control when used with an RTI XP series control processor. In addition, the unit's integrated 10/100Base-T Ethernet port with Power-over-Ethernet (POE) provides the flexibility to accommodate any installation.

Part #: 10-210486-22



Key Features

- Ships with stylish, low-profile white bezel - bezels also available in black and light almond.
- Faceplate and buttons are black with a glossy finish.
- Fits in a 4"x4" square electrical junction box (See important information below).
- Integrated mounting wings for easy installation in retrofit installs.
- Fully customizable 2.8" display and twelve assignable/programmable buttons.
- QVGA resolution (240w x 320h) TFT LCD to display custom buttons, text and graphics.
- Integrated 10/100Base-T Ethernet port with Power-over-Ethernet.
- IR output drives up to 1000 feet of wire.
- Optional modules/processors for voltage sensing, relays and advanced two-way control.
- USB and Ethernet Programming.

Installation Notes

- Power supply not included - A separate power supply (PS16 or similar), an RTI CB8 connecting block or a network router with Class2 Power over Ethernet (PoE) is required for power.
- Laser Shark compatible for custom engraved button keycaps.

Specifications

| | |
|-------------------------------------|--|
| Power | +9VDC to +16VDC, .5A max or 802.3af Power-over-Ethernet |
| Touchscreen Display | 2.8" (71mm) diagonal, high-brightness color TFT LCD |
| | QVGA (240w x 320h pixels) with 65K colors |
| Infrared Output Port..... | 200mA output, Drives up to 1000 ft (300 m) of wire |
| Operating Temperature..... | +32°F to +122°F (0°C to +50°C) |
| Operating Humidity..... | 5% to 95% Non-condensing |
| Ethernet Port | 10/100Base-T with Power-over-Ethernet |
| Mounting..... | Integrated mounting wings, or screws through front bezel |
| Front Plate Dimensions (H x W)..... | 4.4 in (112mm) x 4.6 in (117mm) |
| Installation Cut-Out (H x W)..... | 3.7 in (94mm) x 3.7 in (94mm) |
| Total Depth in Wall | 1.2 in (31mm) plus cables |
| Weight | 7.5 oz (212g) |
| Warranty | One Year (Parts & Labor) |

KX2 Accessories

Standard Bezels

| | |
|-----------------------------|--------------|
| BZA-KX2 - Light Almond..... | 10-210519-19 |
| BZB-KX2 - Black..... | 10-210517-17 |

Premium Bezels

NA

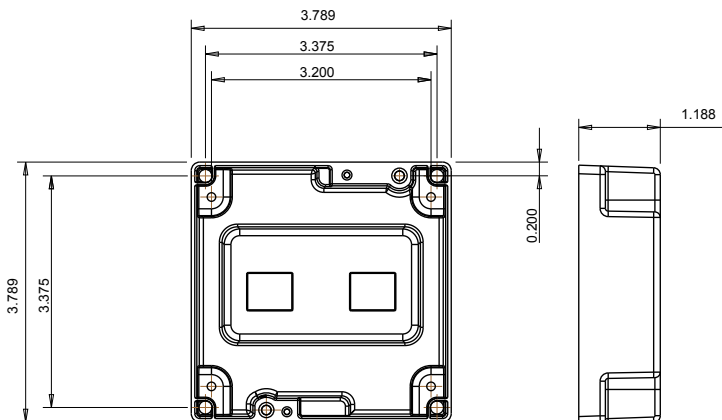
KX2 Installation Notes

The KX2 uses a standard 4"x4" electrical junction box. These should be available at most hardware stores or electrical supply stores online (ex. Granger.com)

NOTES:

- A dual gang outlet box will NOT work.
- The KX2 has .38" thick corner tabs, making the KX2 protrude .38" from the front edge of the junction box. Therefore, the electrical box should be mounted flush with the wall stud. Typically wall sheeting materials like drywall are ½" or thicker, allowing the KX2 to be flush with the wall sheeting. If the wall sheeting is thinner than .38", the junction box will need to be mounted set back.
- Use #8 - 32 flat head screws.
- Box should be 1.5" minimum depth.

Electrical Junction Box
4"h x 4"w x 1.5"d



RK3-V In-wall Controller

The perfect balance between display size and resolution, a 3.5 inch LCD is small enough to fit in any decor, yet the full VGA (640x480) high resolution touchscreen provides ample room for displaying custom graphics, web pages and CD cover artwork in amazing detail. In addition, the built-in Ethernet port allows the RK3-V to display MJPEG video from network security cameras and access the internet and more.

Part #:

Satin White Face, Buttons & Bezel: 10-210346-17

Gloss White Face, Buttons & Bezel: 10-210347-18

Satin Black Face, Buttons & Bezel: 10-210344-15

Gloss Black Face, Buttons & Bezel: 10-210345-16



Key Features

- Wide array of stylish low-profile bezels with snap-on attachment available.
- Available with white or black faceplate and buttons.
- Integrated mounting wings for easy installation.
- Nine assignable/programmable keys.
- Full VGA resolution (480w x 640h) TFT LCD to display custom buttons, text and graphics.
- Powerful 32-bit, 200MHz XScale® processor.
- Integrated 10/100Base-T Ethernet port with Power-over-Ethernet.
- Plasma friendly infrared receiver for command pass-through.
- Completely customizable and programmable.
- Optional modules/processors provide two-way control.
- USB and Ethernet Programming.

Installation Notes

- Power supply not included - A separate power supply (PS16 or similar), an RTI CB8 connecting block or a network router with Class3 Power over Ethernet (PoE) is required for power.
- Laser Shark compatible for custom engraved button keycaps.

Specifications

Power+9VDC to +16VDC, .5A max or 802.3af Power-over-Ethernet
 Power ManagementAdjustable backlight brightness/power down time
 Touchscreen Display 3.5 in (89mm) diagonal, high-brightness color TFT LCD
VGA (480w x 640h pixels) with 65K colors
 Infrared Output Port.....200mA output, Drives up to 1000 ft (300 m) of wire
 Ethernet Port 10/100Base-T with Power-over-Ethernet
 Operating Temperature..... +32°F to +122°F (0°C to +50°C)
 Operating Humidity.....5% to 95% Non-condensing
 Mounting.....Integrated mounting wings, or screws through front bezel
 Front Plate Dimensions (H x W).....5.75 in (146mm) x 5.5 in (140mm)
 Installation Cut-Out (H x W).....5.13 in (130mm) x 4.75 in (120mm)
 Total Depth in Wall 1.13 in (29mm) plus cables
 Weight 10 oz (284 g)
 Warranty.....One Year (Parts & Labor)

RK3-V Accessories

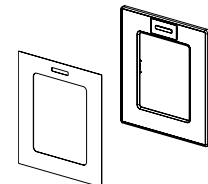
Standard Bezels

| | |
|------------------------|--------------|
| BZW-RK3V - White..... | 30-210130-10 |
| BZA-RK3V - Almond..... | 30-210132-12 |
| BZI-RK3V - Ivory..... | 30-210133-13 |
| BZS-RK3V - Silver..... | 30-210134-14 |
| BZB-RK3V - Black..... | 30-210131-11 |



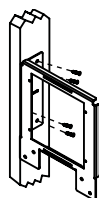
Premium Bezels

| | |
|---|--------------|
| BZGW-RK3V Gloss White..... | 10-210269-21 |
| BZGB-RK3V Gloss Black..... | 10-210270-13 |
| PBBA-RK3V Satin Black with Black Anodized Insert..... | 10-210200-06 |
| PBBR-RK3V Satin Black with Brushed Aluminum Insert.. | 10-210201-07 |



Preconstruction Bracket

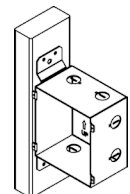
- Flanges located on the side and the bottom for attaching to either a wall stud or a cross member support.
- Steel construction.



Part #: 40-210294-22

Backbox

- Flanges located on the side for attaching to a wall stud.
- Steel construction.
- Nine pre-punched knockouts for wiring.



Part #: 30-210153-15

KX7 In-wall Controller

The extraordinary KX7 is packed full of powerful features for complete control of the entertainment, environment and security systems in a wall-mounted color LCD touchpanel. A bright 7" WVGA multi-touch capacitive touch screen displays the completely customizable control interface. In addition, composite, S-video and component video inputs provide crystal clear video at up to 576p resolution.

Part #: 10-210484-20



Key Features

- 800x480 WVGA LCD with integrated multi-touch capacitive touch screen.
- Composite, S-Video or Component video input at up to 480i, 576i, 480p or 576p.
- Integrated 10/100 Base-T and 802.11 Wireless Ethernet.
- Built-in RS-232 port for one-way control without a separate control processor.
- Built-in high output IR port for direct control.
- Powered using power supply or PoE (Power over Ethernet)
- Optional modules/processors provide additional two-way control.
- USB and Ethernet Programming.
- Stylish low-profile faceplate available in multiple colors (ships with white).
- Integrated mounting wings for easy installation.

Installation Notes

- Power supply not included - A separate power supply (PS16 or similar), an RTI CB8 connecting block or a network router with Class3 Power over Ethernet (PoE) is required for power.

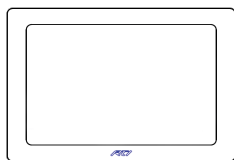
Specifications

| | |
|---|---|
| Power | +9VDC to +16VDC, 1A max |
| Power Management | Adjustable backlight brightness/proximity sensor |
| Touchscreen Display | 7.0 in (177mm) diagonal, High-brightness color TFT LCD |
| Display Backlight | WVGA (800x480 pixels) with 65K colors |
| Infrared Output Through control port, 200mA output drives up to 1000 ft (300 m) of wire Ethernet Port | Dual CCFL, 300nit |
| Wireless Ethernet | 10/100 Base-T with Power-over-Ethernet |
| Operating Temperature | 802.11b/g |
| Operating Humidity | +32°F to +122°F (0°C to +50°C) |
| Video Input | 5% to 95% Non-condensing |
| Mounting | Three, BNC Connectors |
| Installation Cut-Out (H x W) | Composite, S-Video or Component Analog Video - NTSC/PAL/SECAM |
| Outer Bezel Dimension (H x W) | Integrated mounting wings, or screws through front plate |
| Total Depth in Wall | 5.6 in (143mm) x 7.7 in (195mm) |
| Weight | 5.9 in (151mm) x 8.5 in (217mm) |
| Warranty | 1.4 in (36mm), with video connector 2.1 in (53mm) |
| | 1.4 lbs (634g) |
| | One Year (Parts & Labor) |

KX7 Accessories

Standard Bezels

| | |
|--------------------------------|--------------|
| BZB-KX7LA - Light Almond | 10-210500-09 |
| BZB-KX7BL - Black | 10-210498-25 |



Premium Bezels

| | |
|------------------------------------|--------------|
| BZB-KX7BA - Brushed Aluminum | 10-210499-26 |
|------------------------------------|--------------|

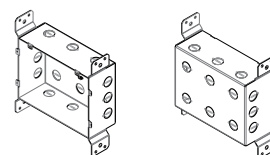


Preconstruction Bracket

NA

Backbox

- Flanges located on the side for attaching to a wall stud.
- Steel construction.
- Pre-punched knockouts for wiring.



Part #: 10-210482-18

CX7 Tabletop Controller

From the kitchen countertop to the conference room, the hard-wired CX7 is perfect wherever “always on”, intuitive control is required. The 7" LCD touchpanel has adjustable tilt, allowing the display to be angled straight up to nearly flat. The CX7 can even be mounted inverted under a cabinet. Additional features include wired and wireless Ethernet for two-way control, digital video (motion JPEG) and web browsing, while analog audio/video inputs and stereo speakers provide video viewing from sources such as satellite TV.

Part #: 10-210512-12



Key Features

- 800x480 WVGA LCD with integrated multi-touch capacitive touch screen.
- Composite, S-Video or Component video input at up to 480i, 576i, 480p or 576p.
- Analog audio input and stereo speakers.
- Integrated 10/100 Base-T and 802.11 Wireless Ethernet.
- Built-in RS-232 port for one-way control without a separate control processor.
- Built-in high output IR port for direct control.
- Powered using power supply or PoE (Power over Ethernet)
- Optional modules/processors provide additional two-way control.
- USB and Ethernet Programming.
- Adjustable tilt display (from 10°-90°) or unit can be mounted upside down under a cabinet.

Specifications

| | |
|-----------------------------|---|
| Power | +12VDC, 1A max |
| Power Management | Adjustable backlight brightness/proximity sensor |
| Touchscreen Display | 7.0 in (177mm) diagonal, High-brightness color TFT LCD |
| | WVGA (800x480 pixels) with 65K colors |
| Display Backlight | Dual CCFL, 300nit |
| Infrared Output | Control port, 200mA output drives up to 1000 ft (300 m) of wire |
| Ethernet Port | 10/100 Base-T with Power-over-Ethernet |
| Wireless Ethernet | 802.11b/g |
| Operating Temperature | +32°F to +122°F (0°C to +50°C) |
| Operating Humidity | 5% to 95% Non-condensing |
| Video Input | Three, BNC Connectors |
| | Composite, S-Video or Component Analog Video - NTSC/PAL/SECAM |
| Mounting | Tabletop, or screws through front plate |
| Dimensions (LxWxH) | 7.5" (190mm) x 7.3" (185mm) x 6.25" (159mm) |
| Weight | 2.0Lbs (934g) |
| Warranty | One Year (Parts & Labor) |

Virtual Panel PC App



Virtual Panel offers the same intuitive control experience as RTI remote controls on desktop and laptop PCs running Microsoft Windows®. Providing secure local or remote access to an RTI system from any Internet connection, the Virtual Panel allows for LAN control and WAN control off site. Whether at the office, on vacation, or anywhere in between, users can access the Virtual Panel to adjust thermostats, monitor security systems, turn off lights, and much more, right from their computer.

Fully customizable using RTI's Integration Designer® programming software, the Virtual Panel interface can be customized to accommodate any size laptop or monitor display and provides full two-way feedback using an RTI XP series control processor.

Virtual Panel License

Part#: 10-210453-16

For licensing and installation information, please visit:
www.rticorp.com/dealers

Key Features

- Control and monitor your RTI system from any Ethernet-connected PC running Microsoft Windows®.
- Programmed using Integration Designer® software.
- Completely customizable user-interface.
- Use as main control interface or in conjunction with RTI handheld and in-wall controllers.
- Control and receive feedback from lighting, security, climate, and more!
- LAN license for local RTI system control.
- Internet license for system control from virtually anywhere.

Licensing

Each Integration Designer system file with an XP series control processor comes with one free Virtual Panel license that will work for locally networked PC's. If you wish to have more than one Virtual Panel "connection" to an XP control processor at one time, or need remote access for control, then a Virtual Panel license must be purchased.

Please visit www.rticorp.com/dealers for Virtual Panel license purchasing information and installation instructions.

System Requirements

- IBM or compatible personal computer running Microsoft Windows XP, Windows Vista, Windows 7 or higher operating system.
- NOTE: Virtual Panel will not run on Windows 95/98/ME.
- At least 256 Megabytes (MB) of RAM.
 - 16 bit color monitor (16 bit color 1024x768 or better recommended, 256 colors not supported).
 - PC and XP series control processor must be connected to the Ethernet network.
 - Remote access requires a connection to the Internet and either a static IP address from the ISP (Internet Service Provider), or a dynamic DNS account implemented.
 - Remote access requires the Virtual Panel license.

RTiPanel App

Apple iPad®, iPhone®, iPod Touch®



Android® Platform



Fully customizable using RTI's Integration Designer® programming software, the RTiPanel offers the same intuitive control experience RTI remote controls offer, running on an Apple or Android smart phone or tablet device. Providing secure local or remote access to an RTI XP series control processor from any Internet connection, the RTiPanel allows for LAN control via Wi-Fi and WAN control off site. Users can view and adjust thermostats, monitor security systems and turn off lights, in addition to controlling their A/V electronics, from the office, on vacation, or virtually anywhere in between.

Apple Licenses:
iPhone/iPod Touch
Part#: 10-210469-23

Android Licenses:
Android Phone
Part#: 10-210488-24

iPad - 1 User
Part#: 10-210470-15

Android Tablet
Part#: 10-210490-17

iPad - 5 User
(Electronic version only)
Part#: 10-210501-10

For licensing and installation information, please visit:
www.rticorp.com/dealers

Key Features

- Control and receive feedback from audio, video, lighting, security, climate, and more!
- RTiPanel app available through Apple App Store®, Google Play® and the Amazon App Store®
- Fully integrate Apple iPad®, iPhone®, iPod Touch® and Android® devices into new or existing RTI control systems utilizing an XP series control processor.
- Completely customizable graphical interface.
- Programmed using same Integration Designer software that is used for all RTI products.
- Supports creation of both portrait and landscape views with minimal extra programming required.
- RTiPanel supports full two-way feedback, including cover art, graphics, text, dynamic scrolling lists, and more!
- Supports local connection via WiFi®, and off-site access via WiFi® or cellular data (if available), with automatic switching.
- Highly optimized for fast connection times.
- Control system programming stored on Apple/Android devices and updates automatically when changes are made.

System Requirements

General

- RTI XP series control processor.
- The device running the RTiPanel App and the XP series control processor must be connected to the Ethernet network.
- Remote access requires a connection to the Internet and either a static IP address from the ISP (Internet Service Provider), or a dynamic DNS account implemented.

Apple iOS Devices

- RTiPanel App compatible with Apple iPad, iPod touch and iPhone.
- Apple devices require iOS 3.2 or higher (* Subject to change without notice.)

Android Devices

- RTiPanel App compatible with Android smart phone and tablet devices.
- Android devices with touchscreen displays larger than 5.5" will require a tablet license.
- Android devices require 2.1 or higher (*Subject to change without notice.)

Apps available for download from



Apple iPad, iPhone, iPod Touch



Android Smart Phone and Tablets



RP-4 Control Processor

The RP-4 Remote Control Processor is a low-cost programmable control system that is designed to automate the operation of audio/video and other electronic systems. It combines an integrated RF receiver, four assignable IR ports, sense inputs, support for the RTiPanel App and more — all in one small, cost-effective package.

Part #: 10-210520-11



Key Features

- Stores all system commands and macros for reliable control.
- Integrated RF receiver.
- Four infrared ports with routing and output adjustment.
- Supports RTiPanel App for one-way control via smartphones and tablets.
- Two voltage sense inputs for monitoring equipment status.
- Two programmable relay outputs
- Works with all RTI 433MHz wireless remote controls.
- RF signal reception LED.
- USB and Ethernet programming.

Installation Notes

- A 433MHz enabled remote control must be used with this model of control processor.
- RTiPanel App provides one-way control only - no feedback.

Specifications

| | |
|---|--|
| Power Supply | +12VDC, 1A |
| RF Receiver Carrier Frequency..... | 433 MHz |
| Infrared Transmission Bandwidth | 15kHz - 460kHz |
| IR Output Ports..... | Four (4), 3.5mm jacks |
| IR Output Drive..... | 100mA maximum (per port, adjustable) |
| Infrared Frequency Transmission Range | 15kHz - 460kHz |
| RS-232 Port..... | One, RJ45 Connection |
| Ethernet Port | One, RJ45 Connection, 10/100Base-T |
| Relays..... | Two, 5Amps @ 30 VDC max |
| Sense Inputs..... | Two, 3-24VDC |
| Mounting..... | Wall-mount or free standing |
| Dimensions (W x H x D) | 7.0" (175mm) x 3.0" (76mm) x 1.0" (25mm) |
| | (Dimension does not include antenna or connectors) |
| Weight | 6.7 oz. (190g) |
| Warranty..... | One Year (Parts & Labor) |

XP-3 Advanced Control Processor

Boasting a powerful 533MHz CPU and 128MB of non-volatile flash memory, this processor packs a big punch at a moderate price. With a built-in ZigBee® transceiver and support for wireless bi-directional communications, the XP-3 can provide the user with rock-solid control and feedback from devices such as music servers, lighting, security, and much more. For complete control in any room, the XP-3 even allows powerful two-way control with Ethernet enabled RTI in-wall controllers, and full support for the RTiPanel and Virtual Panel Apps.

Part #: 10-210443-15



Key Features

- Powerful 32bit, 533MHz CPU and 128Mb of non-volatile Flash memory
- One multi-purpose I/O port supports optional RTI power sensing and communications modules.
- Two IR output ports with variable output.
- Two assignable voltage sense inputs.
- Two programmable relay outputs.
- One two-way RS-232 port for bi-directional communication.
- Integrated 10/100Base-T Ethernet port for programming, control and two-way communication with compatible devices and supports Power over Ethernet (PoE).
- Built-in astronomical clock for time-based events and sleep timers.
- Built-in 2.4GHz ZigBee® RF transceiver module and removable antenna.
- Configurable for communication with RTI in-wall products and 433MHz wireless controllers. (See Notes below)

Installation Notes

- RK2 Keypad not supported with XP3.
- Using a 433MHz RTI remote control requires a separate RM-433 Antenna. Also, while this configuration is possible, its use should be limited to secondary zones that aren't heavily used (guest rooms, outdoor areas etc). Installations requiring primary control via 433MHz controllers should use an RP-4, XP-6 or XP-8s control processor.

Specifications

| | |
|---|--|
| Power Supply | +12V DC, 1A |
| Wireless Networking..... | IEEE802.15.4 Zigbee® network compliant |
| RF Frequency Range | 2.4Ghz - 2.5Ghz |
| Multi-Purpose Output Port (Port 1)..... | One custom 3.5mm 4-conductor jacks |
| | Designed for RTI modules as well as industry-standard IR emitters. |
| IR Output Ports (Ports 2 & 3)..... | Two, 3.5mm jacks |
| IR Output Drive..... | 100mA maximum (per port, adjustable) |
| Infrared Frequency Transmission Range | 15kHz - 460kHz |
| RS-232 Port..... | One, RJ45 Connection |
| Ethernet Port | One, 10/100Base-T |
| Relays..... | Two, 5Amps @ 30 VDC max |
| Sense Inputs..... | Two, 3-24VDC |
| Mounting..... | Wall-mount or free standing |
| Dimensions (W x H x D) | 7.0" (175mm) x 3.0" (76mm) x 1.0" (25mm) |
| Warranty..... | One Year (Parts & Labor) |

XP-6 Advanced Control Processor

Packed with an impressive feature set rivaling processors at twice the price, the XP-6 is the wise choice for powerful command of a professionally installed electronic system! Options for control include IR control, voltage sensing, dedicated RS-232 ports for bi-directional communication, built-in astronomical clock, and more!

Part #: 10-210446-18



Key Features

- Powerful 32bit, 533MHz CPU and 128Mb of non-volatile Flash memory.
- Six multi-purpose I/O ports for infrared and RTI accessory modules for power sensing and one-way RS-232.
- Ethernet support for two-way control and RTiPanel/Virtual Panel support.
- Three programmable 12VDC trigger outputs.
- Three assignable voltage sense inputs.
- Three programmable relay outputs.
- Two RS-232 ports for bi-directional communication.
- Built-in astronomical clock for time-based events and sleep timers.
- Compatible with all RTI wireless remote controls (when used with RTI RF antennas/Zigbee® transceivers) and In-wall controllers.
- Inputs for connection of multiple 433MHz RF receiver modules and one ZM-24 2.4GHz Transceiver.
- Fast USB 2.0 and Ethernet programming.
- Field upgradable firmware.

Specifications

| | |
|---|--|
| Power Supply | +12V DC, 1A |
| IR Output Ports | Six 3.5mm jacks, Compatible with industry standard IR emitters |
| IR Output Drive | 100mA maximum (per port, adjustable) |
| | 200mA maximum (high IR output port) |
| Infrared Frequency Transmission Range | 15kHz - 460kHz |
| Trigger Outputs | Three, 12 VDC, 100mA max each |
| Sense Inputs | Three, 3-24VDC |
| RS-232 Ports | Two, Bi-directional RJ45 Connections |
| Ethernet Port | 10/100Base-T, RJ45 Connection |
| USB Ports | One, Programming |
| Control Port | RS-485 / IR / Pwr, RJ45 Connection |
| RTI Com Port | 2.4 GHz Wireless Communication Port, RJ45 Connection |
| Relays | Three, 5 Amps @30VDC |
| Mounting | Wall-mount or free standing |
| Dimensions (W x H x D) | 10.3in (262mm) x 5.25in (134mm) x 1.5in (38mm) |
| Weight | 1 lb. 3oz. (543g) |
| Warranty | One Year (Parts & Labor) |

XP-8s Advanced Control Processor

The XP-8s is a high-end remote control processor for automating the operation of electronic systems in homes and office buildings. The combination of a blazing fast MPU, real-time/multi-tasking operating system, and tremendous expansion possibilities make the XP-8s the perfect solution for large-scale and complex projects.

Part #: 10-210506-15



Key Features

- Powerful 32bit, 533MHz CPU and 128Mb of non-volatile Flash memory.
- Comes with 4GB SD flash memory card included.
- Eight multi-purpose I/O ports for infrared and RTI modules for power sensing and one-way RS-232.
- Ethernet port allows two-way control via IP and RTiPanel/Virtual Panel support.
- Eight dedicated RS-232 ports allow bi-directional control.
- Eight programmable relays may be programmed for contact or voltage trigger.
- Eight sense inputs allow events to be triggered from either a contact closure or voltage trigger.
- Compatible with RTI ZM-24 2.4GHz Transceiver Module (utilizing Zigbee® technology), RM-433 Antenna Module and in-wall controllers.
- Variable IR output power on all IR ports.
- USB and Ethernet Programming.

Specifications

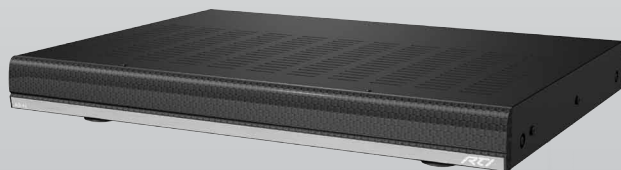
| | |
|---|--|
| Power Supply | +12VDC, 1.0A |
| Multi-Purpose Output Ports | Eight custom 3.5mm 4-conductor jacks |
| | Designed for RTI modules as well as industry-standard IR emitters. |
| IR Output Drive | 100mA maximum (per port, adjustable) |
| | 200mA maximum (high IR output port) |
| Infrared Frequency Transmission Range | 15kHz - 460kHz |
| Relays | Eight, 3 Amps @ 30 VDC or 12V/100mA Trigger |
| Sense Inputs | Eight, Analog/Digital/Closure |
| RS-232 Ports | Eight, RJ45 Connections |
| Ethernet Port | 10/100Base-T, RJ45 Connection |
| RTI Com Port | Zigbee® Communication Port, RJ45 Connection |
| USB Ports | Two Host, 1 Programming |
| Expansion Port | RS-485 / IR / PWR |
| Memory Expansion | SD/MM Card Slot |
| Display | High-contrast STN LCD, 0.7 in x 2.8 in (18mm x 60mm) |
| Mounting | Rack-mount or free standing (Wings and feet included) |
| Dimensions (W x H x D) | 17 in (432mm) x 1.7 in (43mm) x 6.4 in (162mm) |
| Weight | 4 lb. (1814g) |
| Warranty | One Year (Parts & Labor) |

AD-4x Audio Distribution System

The AD-4x is perfect for residential or commercial installations that require music everywhere - without breaking the budget. This compact audio distribution system contains both a matrix switching pre-amp and a built-in power amplifier. The four local source inputs can be augmented with four remote source inputs, making it easy to listen to music from your bedroom CD player, iPod dock, or PC. A single Cat-5 cable connects the remote source's audio and infrared signals between the remote location and the AD-4x.

The AD-4x audio distribution system is designed to be a seamless extension of an RTI control system. The AD-4x provides the audio switching, amplification and distribution functions, while RTI central processors and user interfaces manage the audio source control, user input and status feedback. Information such as the selected source, volume level, and tone control settings are available for each zone.

Part #: 10-210497-24



* Projected Price - Subject to change without notice.

Key Features

- Four analog stereo audio output zones with pre-out jacks.
- Four analog audio source inputs with independent trim level adjustment.
- Independent volume and tone control for all audio zones.
- Accessory wall plate (RSP-1) allows source equipment to be connected remotely with a Cat-5 cable.
- Controlled via IR, or two-way control via RS-232 and IP using RTI control systems.
- Twenty-five watts per channel in each zone.
- Optional phone and doorbell mute function using accessory wall plate (PDM-1).
- Zone power indicator LEDs.
- Compact, low-profile IU design.

Specifications

| | |
|--|---|
| Power | 115VAC or 240VAC (Switchable), 120W |
| Power switch | Front Panel On/Off control with LED power indicator |
| Mounting | Rack mount or free standing |
| Dimensions (w/rack ears & cover) HxWxD | 2.1in(53mm) x 19in(482mm) x 13.3in(340mm) |
| Weight | 11.8 lbs (5.4kg) |
| Local Input Source | Four, RCA jacks |
| Remote Input mixed Source | Four, RJ-45 jacks |
| CRTL In | One, 3.5mm jack, for IR control |
| Remote Source IR Input | One, 3.5mm jack x 4, for IR input |
| RS-232 Port | One, Bidirectional control |
| Ethernet Port | One, RJ45 Bidirectional control |
| Trigger Output (Status) | One, 12VDC@15mA |
| Mute | 3.5mm jack |
| Doorbell Input Sensitivity (PDM1) | AC/DC 3~12V |
| Phone input sensitivity (PDM1) | AC25~100V/20Hz |
| Output Zones | Four stereo zones |
| Pre-amp Output (fixed or variable) | Four stereo zones, RCA jacks |
| Rated Power / Channel | >25 Watts, 20Hz to 20KHz |
| Power/Channel | (RMS, 2 channels driven into 8 ohms) |
| | >25 Watts @1KHz |
| | (RMS, 2 channels driven into 8 ohms) |
| Total Harmonic Distortion @20W/8 ohm | 0.1% |
| Total Harmonic Distortion @1W/8 ohm | 0.1% |
| S/N @ Rated power, IEC A-wtd, Source input shorted | 82dB (mute +1) |
| Frequency Response 20Hz to 20KHz @1W/8 ohms | +0.8dB / -0.4dB |
| Input Overload | 2.5V |
| Input Impedance | 11K ohms |
| Channel separation @1KHz | 75dB |
| Crosstalk Between Sources @rated power /1KHz | 75dB |
| Crosstalk Between Zones @rated power /1KHz | 75dB |
| Treble control @10KHz | 10dB +/-0.5dB |
| Bass control range @100Hz | 10dB +/-0.5dB |
| Warranty | One Year (Parts & Labor) |

AD-4x Accessories

RSP-1 Remote Source Wallplate

- Two RCA input jacks for connection to the output (left and right) of a remote audio source (Receiver, CD Player etc).
- A 3.5mm stereo mini jack for connection to the output of a remote audio source (iPod®, PC etc).
- A 3.5mm mono mini jack for connection of an IR emitter to control the remote source. IR control delivered from control system.
- Compatible with standard single-gang Decora® style faceplates. (Not Included).
- Standard single-gang electrical box installation.

Part #: 10-210343-14



PDM-1 Phone/Doorbell Mute Wallplate

- A 3.5mm non-shorting stereo mini jack allows easy wiring to AD-4x or AD-8x Audio Distribution Systems.
- Connections for two different doorbell chimes.
- RJ-11 connection for convenient wiring to phone system.
- Compatible with standard single-gang Decora® style faceplates. (Not Included).
- Standard single-gang electrical box installation.

Part#: 10-210342-13



AD-8x Audio Distribution System

Perfect in larger residential and commercial installations where flexibility is important, the AD-8x Audio Distribution System combines a 16 channel audio amplifier with a matrix-switching pre-amplifier. This provides the ability to listen to eight different audio sources in any zone. In addition, up to four of the audio sources can come from other rooms, allowing sources like an iPod or PC to be accessed from other locations, away from the rack. Meanwhile, the integrated Cool Power® amplifier provides 25 watts per channel of crystal clear sound. Control is available via IR, and for advanced two-way control is provided via RS-232 and IP, when combined with RTI control solutions.

When the job grows, the AD-8x can expand along with it. The eight zone outputs can easily be expanded by stacking up to eight AD-8x units together, for a maximum of 64 zones. The AD-8x from RTI will provide you with clean, stable, reliable power you can count on for years to come.

Part #: 10-210496-23



* Projected Price - Subject to change without notice.

Key Features

- Eight analog stereo audio output zones with fixed and variable pre-outs.
- Eight analog audio source inputs with independent trim level adjustment.
- Distribute eight audio source inputs to eight zone, expandable to 64 zones by stacking additional AD-8x units.
- Four remote source inputs for devices located away from rack.
- Accessory wall plate (RSP-1) allows remote source equipment to be connected and controlled remotely over a Cat-5 cable.
- Independent volume and tone control for all output zones.
- Controlled via IR, and two-way control with feedback via RS-232 and IP when installed with RTI control systems.
- Twenty-five watts per channel in every zone.
- Optional phone and doorbell mute function using accessory wall plate (PDM-1).

Specifications

| | |
|---|---|
| Power | 115VAC or 240VAC (Switchable), 230W |
| Power switch | Front Panel On/Off control with LED power indicator |
| Mounting | Rack mount or free standing |
| Dimensions Chassis (without rack ears & front cover)HxWxD | 5.24in(133mm) x 17.0in(432mm) x 14.75in(375mm) |
| Weight | 24.2lbs (11.0kg) |
| Operating Temperature..... | C -10 to +40 degrees F +14 to +104 degrees |
| Local Source Audio Inputs..... | Eight, RCA jacks x 16 |
| Remote Source Input..... | Four, RJ-45 jacks |
| CRTL In | One, 3.5mm jack, for IR control |
| Remote Source IR Input | One, 3.5mm jack x 4, for IR input |
| RS-232 Port..... | One, DB9 Bidirectional control |
| Ethernet Port | One, RJ45 Bidirectional control |
| Trigger Output (Status) | One, 12VDC@15mA |
| Voltage Output..... | One, 12VDC@500mA |
| Mute..... | 3.5mm jack |
| Doorbell Input Sensitivity (PDM1) | AC/DC 3~12V |
| Phone input sensitivity (PDM1) | AC25~100V/20Hz |
| Output Zones..... | Eight, two channels each, phoenix connector |
| Pre-amp Output (fixed or variable)..... | Eight zones, two channels each, RCA jacks |
| Rated Power / Channel | >25 Watts, 20Hz to 20KHz |
| | (RMS, 2 channels driven into 8 ohms) |
| Power/Channel | >25 Watts @1KHz |
| | (RMS, 2 channels driven into 8 ohms) |
| Total Harmonic Distortion @20W/8 ohm | 0.1% |
| Total Harmonic Distortion @1W/8 ohm | 0.1% |
| S/N @ Rated power, IEC A-wtd, Source input shorted | 82dB (mute +1) |
| Frequency Response 20Hz to 20KHz @1W/8 ohms | +0.8db / -0.4dB |
| Input Overload | 2.5V |
| Input Impedance..... | 11K ohms |
| Channel separation @1KHz..... | 75dB |
| Crosstalk Between Sources @rated power /1KHz | 75dB |
| Crosstalk Between Zones @rated power /1KHz | 75dB |
| Treble control @10KHz | 10dB +/-0.5dB |
| Bass control range @100Hz | 10dB +/-0.5dB |
| Warranty..... | One Year (Parts & Labor) |

AD-8x Accessories

RSP-1 Remote Source Wallplate

- Two RCA input jacks for connection to the output (left and right) of a remote audio source (Receiver, CD Player etc).
- A 3.5mm stereo mini jack for connection to the output of a remote audio source (iPod®, PC etc).
- A 3.5mm mono mini jack for connection of an IR emitter to control the remote source. IR control delivered from control system.
- Compatible with standard single-gang Decora® style faceplates. (Not Included).
- Standard single-gang electrical box installation.

Part #: 10-210343-14



PDM-1 Phone/Doorbell Mute Wallplate

- A 3.5mm non-shorting stereo mini jack allows easy wiring to AD-4x or AD-8x Audio Distribution Systems.
- Connections for two different doorbell chimes.
- RJ-11 connection for convenient wiring to phone system.
- Compatible with standard single-gang Decora® style faceplates. (Not Included).
- Standard single-gang electrical box installation.

Part#: 10-210342-13



CP-450 4 Channel Amplifier

The CP-450 is designed to add more power to an audio distribution system, at a moderate price. Equipped with a 50 watt per channel Cool Power® Amplifier, the CP-450 is perfect for installations using the AD-4x or AD-8x Audio Distribution Systems that require a couple extra speakers for those bigger rooms or maybe adding another room to a zone.

With an audio distribution system such as the AD-4x/AD-8x that does all the source switching and volume control, the CP-450 is designed to be mounted in the rack, offering up additional power to where it's needed. With a slim form factor, only one space is needed in rack installations, while feet are included for free standing installations. Flexible control options include IR, RS-232 or a voltage trigger input to power the unit on, while a 12VDC trigger out and IR passthrough make daisy chaining CP-450 amplifiers a breeze.

Part #: 10-210455-18



Key Features

- Four channel amplifier utilizes Cool Power® technology.
- Fifty watts per channel.
- Expands AD-4x/AD-8x speaker outputs.
- Voltage trigger (3-30V AC/DC), RS-232 or IR power control.
- Rackmount or free standing installation.
- IR passthrough port

Specifications

| | |
|--|---|
| AC Input Voltage..... | 115VAC or 240VAC (Switchable), 230W |
| Power Switch | Front Panel On/Off with LED |
| Mounting..... | Rack mount or free standing |
| Dimensions..... | (HxWxD) 2.1in(53mm)x16.9in(430mm)x13.3in(340mm) |
| Weight | 14lbs (6.4kg) |
| Operating Temperature | C -10 to +40degrees, F +14 to +104 degrees |
| IR Input | One, 3.5mm, for IR control |
| IR Output | One, 3.5mm, for IR Passthrough |
| RS232 Port | One, Bidirectional control |
| Trigger Output | One, 12VDC, to trigger another CP-1650 |
| Trigger Input | One, 3-30VDC, for power control |
| Speaker Outputs..... | Two stereo outputs, two channels each, phoenix connectors |
| Audio Inputs..... | Two stereo, RCA jacks (4) |
| Rated Power/Channel | 50 Watts, 20Hz to 20KHz (RMS, 2 chan driven 8ohms) |
| Rated Power/Channel | 70 Watts 20Hz to 20KHz (RMS, 2 chan driven 4ohms) |
| IHF Dynamic Power..... | 80 Watts/1KHz at 8 ohm load |
| | 120 Watts/1KHz at 4 ohm load |
| Total Harmonic Distortion | @50W/8 ohms: 0.03% & 70W/4 ohms: 0.8% |
| Total Harmonic Distortion | @1W/8ohm: .015% |
| S/N @ Rated Power, IEC A-wtd, Source Input Shorted | 100dB |
| Frequency Response | 20Hz to 20KHz @1W/8ohm,+0.4/-0.1dB |
| Input Sensitivity | 1W/50W 8ohms, 135mV/1V |
| Input Impedance..... | 22KOhms |
| Channel Separation..... | @ Rated Power/1KHz, 100dB |
| Crosstalk Between Sources | @ Rated Power/1KHz, 100dB |
| Warranty..... | One Year (parts & labor) |

CP-1650 16 Channel Amplifier

Expanding the capabilities of an audio distribution system, the CP-1650 is perfect in residential and commercial installations where larger rooms need more speakers and other areas need to be added to an existing zone. Designed to be an easy and cost effective way to double the power of the AD-4x and AD-8x outputs, having the additional 50 watts per channel solves those installation puzzles. If the power needs even more boost, you can bridge two channels with a simple flip of a switch, for a whopping 100 watts per channel.

The CP-1650 is designed to offer greater flexibility, especially in larger installations. Unique features, including looped audio outputs, a 12VDC trigger out and IR passthrough, make it easy to daisy chain multiple units together. Input level adjustments provide a tremendous amount of control over the audio in each room, keeping the big rooms full of sound and the smaller rooms from blaring. Discrete power control options include IR, two-way RS-232 or a voltage trigger input.

Part #: 10-210456-19



Key Features

- Sixteen channel amplifier utilizes Cool Power® technology.
- Fifty watts per channel.
- Audio input level adjustment on each channel.
- Bridgeable audio outputs for increased power (Up to 100W).
- Expands AD-4x/AD-8x speaker outputs.
- Voltage trigger (3-30V AC/DC), RS-232 or IR power control.
- Rackmount or free standing installation.

Specifications

| | |
|--|---|
| AC Input Voltage..... | 115VAC or 240VAC (Switchable), 230W |
| Power Switch..... | Front Panel On/Off with LED |
| Mounting..... | Rack mount or free standing |
| Dimensions..... | (HxWxD) 5.24in(133mm) x 17.0in(432mm) x 14.75in(375mm) |
| Weight | 23.4lbs (10.6kg) |
| Speaker Outputs..... | Eight stereo outputs, two channels each, phoenix connectors |
| Audio Inputs..... | Eight, RCA jacks x 16 |
| Audio Loop Outputs..... | Eight, RCA jacks x 16 |
| Audio - 2 Channel Mode | |
| Rated Power/Channel | 30 Watts, 20Hz to 20KHz (RMS, 2 ch driven into 8 ohms) |
| Power/Channel | 50 Watts, 20Hz to 20KHz (RMS, 2 ch driven into 4 ohms) |
| IHF Dynamic Power..... | 1KHz @ 1% distortion: 35 Watts @ 8 Ohms |
| | 1KHz @ 1% distortion: 70 Watts @ 4 Ohms |
| Audio - Bridged Mode | |
| Rated Power/Channel | 100 Watts, 20Hz to 20KHz (RMS, 2 ch driven into 8 ohms) |
| IHF Dynamic Power..... | 1KHz @ 1% distortion: 140 Watts @ 8 Ohms |
| Total Harmonic Distortion | (1W/8 ohms), 0.03% |
| | (30W/8 ohms), 0.5% |
| | (50W/4 ohm), 0.45% |
| | Audio - General |
| S/N @ 30W/8 ohm, IEC A-wtd, Source Input shorted | 100dB |
| Frequency Response | 20Hz-20KHz @ 1w/8 ohms +2.1/-0.5dB |
| Input Sensitivity | 1W @ 8 ohms, 149mV/800mV |
| Input Impedance..... | 23KOhms |
| Channel Separation..... | @ Rated Power/1KHz, 60dB |
| Crosstalk Between Ch1L-Ch3L @ Rated Power | 1KHz: 75dB |
| Warranty..... | One Year (parts & labor) |

RTiDock

The RTiDock features a host of benefits not found on other iPod® docks, such as rack-mount or desktop installation options, and the ability to sync with iTunes over the network using RTiSync technology. For simple, intuitive operation, the device offers a full on-screen GUI (Graphical User Interface) and video output for navigation through a video display. A sliding tray provides easy access and discreet storage of the iPod for added reliability and a clean design.

The RTiDock offers seamless integration with RTI control devices. Access to all transport functions of the iPod is available using infrared commands. For more robust control, the RTiDock also allows bi-directional communication over RS-232 or IP when used with an RTI control system, for navigation through music libraries. The RTiDock is the ultimate iPod accessory for any distributed audio system!

Part #: 10-210242-12



iPod® Tray

Key Features

- On-screen interface (GUI) for navigation of music on a TV display.
- Sliding tray provides a clean look and improved reliability.
- RTiSync technology allows syncing with iTunes over the network.
- Compatible with iPod Classic®, iPod Nano®, iPod Touch®. - see below
- Analog and digital audio output connectors.
- Built-in IR receiver and 3.5mm mini-jack for IR control.
- Supports, IR/RS-232/Ethernet control.
- Blue LED base emits a cool glow.
- Slim design allows rack mounting, or may be used free standing.
- Charges iPod battery.
- Screen saver mode shows album art on television display.
- Field-upgradable firmware.

Installation Notes

- Apple devices using the "Lightning" connector (ex iPhone 5/iPod Touch 5th generation) require an adapter for connection to the RTiDock. With this adapter in place, the drawer will not shut. This does not affect performance other than not being able to close the drawer.

Specifications

| | |
|--|--|
| Dock DC Voltage | 12VDC |
| iPod Charge Power Supplied | 5VDC, 1A |
| Power Indicator | Bi-color Red/Green, LED |
| iPod Connection | Cable with connector overmold |
| USB | Type A, Future use |
| RS-232 Control | One, RJ45 |
| Ethernet | One, 10Base-T/100Base TX, RJ45 |
| Analog Audio Output (Stereo) | One, RCA x 2 |
| SPDIF Digital Audio Output | One, RCA x 2 |
| Component Video Output (Y/Pr/Pb) | One, RCA x 3 |
| IR Inputs | One, IR sensor window |
| | One, 3.5mm mini-jack |
| Network Indicator | Two, LED (Orange/Green) |
| Decorative Base Lighting | Blue LEDs |
| Reset Switch | One, Rear push button |
| Operating Temperature | C -10 to +40 degrees F +14 to +104 degrees |
| Dimensions HxWxD | 1.25" (25mm) x 7.5" (150mm) x 7.5" (150mm) |
| Weight | 1lb 6.6oz (642g) |
| Warranty | One Year (Parts & Labor) |

RTiDock Accessories

RTiDock RMK - Rack Mount Accessory Kit

- Dual rack mount allows one or two RTiDocks to be hidden away in the rack, yet accessible to everyone.
- A low profile takes minimal space in the rack.

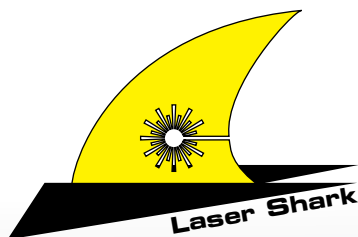
Part#: 10-210449-21



Specifications

| | |
|------------------------------|--|
| Dimensions (W x H x D) | 17.0" (432mm) x 1.7" (43mm) x 7.4" (188mm) |
| | Width including mounting wings 19.0" (482) |
| Warranty | One Year (Parts & Labor) |

Laser Shark



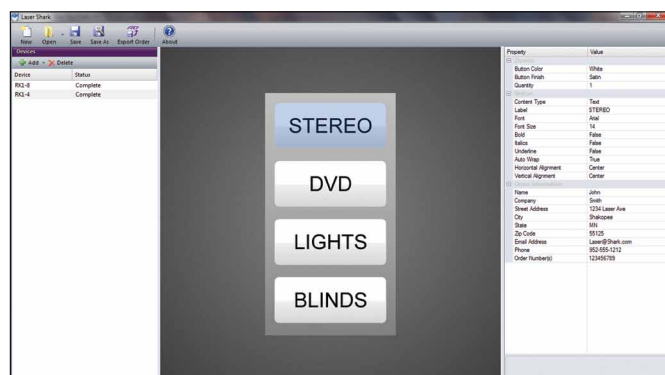
RTI is pleased to offer dealers the ability to create their own custom button labels for compatible RTI products. The powerful yet simple to use Laser Shark® software allows you to use almost any font or graphic, to insure intuitive control for the end-user.

Part #: 10-210478-23

Key Features

- Allows easy customization of button keycap labels on certain RTI products.
- Select from almost any font type, language, symbol or graphic image.
- Compatible with RKM-1+, RK1-2, RK1-4, RK1-8, KX2, RK3-V, T1-B, T1-B+, T2i, T2x, and T3V+.
- Ordering via the Internet.
- Software is free of charge and available to RTI dealers only.

Laser Shark Software



Laser Shark Software available on the dealer section of the RTI website - rticorp.com

Buttons Available for Engraving



RKM-1+ interchangeable source indicator lens.



RK1 2
RK1-4
RK1-8



KX2 In-wall Controller
• All twelve hard button keycaps.



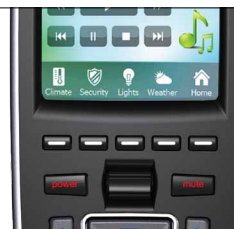
RK3-V In-wall Controller
• All nine hard button keycaps.



T1-B/T1-B+ Remote Controls
• Eight "source" button keycaps located at the top of the T1-B.
• Four "general purpose" button keycaps below the power button.



T2x/T2i Remote Controls
• Four "general purpose" button keycaps below the touch screen.



T3-V+ Remote Control
• Five "general purpose" button keycaps below the touch screen.

CB-8 Connecting Block

The CB-8 is an installation accessory designed to provide convenient and reliable power for up to eight (see installation notes) RTI in-wall system controllers. In addition to providing power, the CB-8 combines and routes the infrared outputs from the system controllers to a single output, for connection to an RTI control processor.

Part #: 10-210205-11



Key Features

- Includes 16VDC, 4.3 Amp power supply capable of powering up to eight RTI in-wall system controllers.*
- Multiple CB-8 units can be daisy-chained for connecting more in-wall system controllers.
- Standard RJ45 ports for easy connection of touchpanels.

Installation Notes

- Each CB-8 provides power to the following devices up to the distances listed using IR or Ethernet for control (if available). For control via RS485, the total wired distance for all attached devices should be kept under 1000 ft (300m).
 - KX7, K4 - 4 maximum - Up to 150 feet away.
 - RK3, RK3-V - 8 maximum - Up to 500 feet away.
 - KX2, RK-2, RK-1, RKM-1+ - 8 maximum - Up to 1000 feet away.
 - Expansion Modules (PCM-8) - 8 maximum - Up to 1000 feet total wired distance to all modules.
- Not compatible with the RK10.

Specifications

| | |
|--------------------------------|------------------------------------|
| Power | +16VDC, 4.3A |
| Maximum Current per Port | 1.5A |
| Enclosure | Formed steel, black powder coating |
| Dimensions (H x W)..... | 5.5 in (127mm) x 9.4 in (239mm) |
| Mounting..... | Wall-mount or free standing |
| Weight | 12.6oz (359g) |
| Warranty | One Year (Parts & Labor) |

CM-232 RS-232 Communication Module

The CM-232 communication module provides an RS-232 interface to almost any RS-232 enabled device. It attaches to supported RTI control processors on one end, and a device's DB-9 serial port connector on the other end. The CM-232 is capable of one-way transmission (no receive function is supported) of user-defined character or binary strings.

Part#: 10-210017-13



Key Features

- Connects to the MPIO ports of RTI control processors (ex. XP-6, XP-8s etc) and expansion modules (ex. PCM-4).
- Offers one-way RS-232 communication with nearly any RS-232 enabled device.
- Software-selectable baud rate up to 115.2K (depending on control system).
- Industry-standard DB-9 male connector.
- No power supply required - Power is supplied by the output ports.
- User-definable output strings using Integration Designer® software.

Specifications

| | |
|------------------------------|--------------------------------------|
| Baud Rate..... | Software Selectable |
| | (Depends on attached control system) |
| Cable Length | 12 Feet (3.7 m) |
| Connector | DB-9 Male |
| Pins Used | GND, TXD, DTR (tied high) |
| Dimensions (W x H x D) | 1.3" (33mm) x .5" (14mm) x 2" (51mm) |
| Warranty | One Year (Parts & Labor) |

CPB-1 Control Port Connecting Block

The CPB-1 Control Port Connecting Block provides a cost effective solution for installations such as classrooms or boardrooms that require an in-wall controller and both infrared and RS-232 control of local devices. The CPB-1 provides power to one RTI in-wall system controller and has two output ports that allow the connection of up to two single or dual infrared emitters. It also incorporates an RS-232 port for control of devices without the need of an RTI processor.

Part #: 10-210195-19



Key Features

- Provides power for one in-wall controller.
- RJ45 - DB9 adapter included.
- Two infrared emitter outputs.
- Variable IR output power.
- Allows RTI in-wall controllers to communicate via one-way RS-232 to devices without a processor.
- 12VDC power supply included.

Specifications

| | |
|---------------------------------|---|
| Power Supply | +12VDC, 1A |
| Number of IR Output Ports | Two |
| Output Ports | 3.5mm jacks |
| | Works with industry-standard IR emitters. |
| IR Output Drive..... | 100mA maximum (per port, adjustable) |
| Infrared Input | Compatible with industry-standard repeaters and receivers |
| RS-232 Port..... | RJ45 Connection |
| | Includes RJ45 to DB9 adapter |
| Mounting..... | Wall-mount or free standing |
| Dimensions (W x H x D) | 4.0" (102mm) x .35" (89mm) x 1.1" (28mm) |
| Weight | 8.4 oz. (238g) |
| Warranty | One Year (Parts & Labor) |

ECB-5 IR Connecting Block

The ECB-5 IR Emitter Connecting Block provides expanded infrared signal distribution when used with RTI control processors, in-wall touch panels, third party infrared repeater systems, etc. It has one infrared signal input and five emitter output ports that allow the connection of up to five single or dual infrared emitters.

Part #: 10-210076-17



Key Features

- Five infrared emitter outputs.
- incorporates a sense input for monitoring the power status of a switched outlet, current sensor, light sensor, etc.
- Variable IR output power.
- Steel construction.
- No power supply required for operation.

Specifications

| | |
|----------------------------------|---|
| Power Supply (not included)..... | +9VDC to +16VDC, 1.5A |
| Number of Output Ports..... | Five |
| Output Ports | 3.5mm jacks |
| | Works with industry-standard IR emitters. |
| IR Output Drive..... | 100mA maximum (per port, adjustable) |
| Infrared Input | Compatible with industry-standard repeaters and receivers |
| Mounting | Wall-mount or free standing |
| Dimensions (W x H x D) | 2.6" (66mm) x 2.4" (61mm) x .9" (23mm) |
| Weight | 4 oz. (108g) |
| Warranty | One Year (Parts & Labor) |

ESC-2 Ethernet to Serial Converter

The ESC-2 Ethernet to Serial Converter provides a convenient way to add two RS-232 ports to an RTI XP series control processor. Wire the ESC-2 to the local Ethernet network with standard cat-5 cable and it will offer full two-way control, as if the device was wired directly to the control processor. Two RJ-45 jacks provide efficient cat-5 cabling between the ESC-2 and the device being controlled.

Part #: 10-210467-21



Key Features

- Provides two additional serial ports to an RTI control processor.
- Use multiple ESC-2 modules for virtually unlimited control of serial devices.
- Integrates seamlessly into Integration Designer.
- Can be discovered and configured by Integration Designer over Ethernet.
- Easy wiring to devices using cat-5 cable - Includes two RJ-45 to serial adapters

Specifications

| | |
|------------------------------|---|
| Power Supply | +5VDC, 1A |
| Serial (RS-232) Ports | Two, RJ-45 |
| | Includes two RJ-45 to DB9 adapters |
| Ethernet Port | One, RJ-45, 10/100 Base-T |
| Enclosure..... | ABS plastic |
| Mounting..... | Wall-mount or free standing |
| Dimensions (W x H x D) | With Tabs 2.8" (71mm) x 1.8" (45mm) x 1.0" (25mm) |
| Weight | 1.7 oz. (50g) |
| Warranty | One Year (Parts & Labor) |

IPE-4 IR Port Expander

The IPE-4 IR Port Expander provides convenient infrared signal expansion when used with RTI control processors. It has one 3.5mm infrared signal input jack and four IR emitter output ports that allow the connection of up to four single or dual infrared emitters. No additional power supply is required.

Part #: 10-210479-24



Key Features

- Allows easy expansion of up to four emitters to a control processor IR port.
- Compatible with most industry standard single or dual IR emitters.
- Sturdy steel construction.
- A power supply is not required for the IPE-4 to function.
- A 3'(1m) mono cable with 3.5mm mini-plugs is included for easy connection to RTI processors.

Specifications

| | |
|------------------------------|---|
| Number of Output Ports..... | Four |
| Output Ports | 3.5mm jacks |
| | Works with industry-standard IR emitters. |
| IR Output Drive..... | 100mA maximum (per port) |
| Infrared Input | 3.5mm jack |
| | Compatible with RTI processors, industry-standard repeaters and receivers |
| Mounting | Wall-mount or free standing |
| Dimensions (W x H x D) | With tabs 5.1"(130mm) x 1.9"(48mm) x .9"(23mm) |
| Weight | 6.8 oz. (192g) |
| Warranty | One Year (Parts & Labor) |

IR-PRO IR Capture System

The IR-PRO is an infrared code capture system that is specifically designed for system integration professionals. Unlike the capture hardware available in universal “learning” remote controls, the IR-PRO incorporates a much more robust and sophisticated circuit design. This, combined with RTI's proprietary software algorithms, allows the IR-PRO to reliably capture almost any infrared code regardless of code format, frequency, output strength etc.

Part#: 10-210043-11



Key Features

- Advanced infrared detection circuit ensures accurate code capture under almost any condition.
- Compatible with virtually all brands of A/V equipment and remote controls.
- EMI noise suppression for glitch-free acquisition.
- USB port for programming and power.
- Compact, rugged design.
- Available only to professional system integrators.
- Includes two (2) USB programming cables and a durable plastic carrying case.
- Two year parts and labor warranty.

Specifications

| | |
|----------------------------------|--|
| Power Requirements | Powered directly from USB port |
| IR Carrier Frequency Range | Up to 460 kHz |
| Operating Temperature | +32°F to +122°F (0°C to +50°C) |
| Operating Humidity | 5% to 95% non-condensing |
| Dimensions | 4.5in(114mm) x 2.8in(71mm) x 1.3in(33mm) |
| Weight | 6.0 oz. (170 grams) |

PCM-4 Ethernet Port Control Module

With four multi-purpose I/O ports and a voltage trigger output (12VDC), the PCM-4 expands the output capabilities of an RTI XP series control processor to accommodate larger projects. Built-in Ethernet (with PoE) allows for convenient control over the local area network (LAN). Each MPIO port provides IR routing capabilities, one-way RS-232 communication* and power sensing.*

* With RTI accessory devices.

Part#: 10-210493-20



Key Features

- Four multi-purpose I/O ports made available to an RTI XP series control processor.
- Use multiple PCM-4 modules for virtually unlimited control of devices.
- Communication with XP processor over Ethernet network (LAN).
- Powered using power supply or class2 PoE (Power over Ethernet).
- Variable IR output power.
- 12VDC voltage trigger output.

Specifications

| | |
|--|---|
| Power Supply | +12VDC, 1A |
| Multi-Purpose Output Ports | Four custom 3.5mm 4-conductor jacks |
|Designed for RTI modules as well as industry-standard IR emitters | |
| IR Output Drive | 100mA maximum (per port, adjustable) |
| Infrared Frequency Transmission Range | 15kHz - 460kHz |
| Infrared Input | Compatible with industry-standard repeaters and receivers |
| Ethernet Port | One, RJ-45, 10/100 Base-T with Power-over-Ethernet |
| Trigger Output | One, 12 VDC, 100mA max |
| USB Port | One, Programming |
| Enclosure | Formed steel, black powder coating |
| Mounting | Wall-mount or free standing |
| Dimensions (W x H x D) | 6.8in (173mm) x 2.9in (74mm) x 1.2in (31mm) |
| Weight | 14.3oz (406g) |
| Warranty | One Year (Parts & Labor) |

PS16-1 Touchpanel Power Supply

The PS16-1 is used to power a single in-wall touchpanel, when a CB-8 Touchpanel Connecting Block is not used.

Part #: 40-210285-22



Key Features

- The PS16-1 is used to power a single in-wall touchpanel, when a CB-8 Touchpanel Connecting Block is not used.

Specifications

| | |
|------------------------------|---|
| Power Supplied | +16 VDC, 1.6A, 25W |
| Dimensions (L x W x H) | 3.7 in (94mm) x 2.2 in (56) x 1.3 in (34mm) |
| Weight | 10.0oz (290g) |
| Warranty | One Year |

RCM-4 Ethernet Relay Control Module

The RCM-4 is equipped with four individually addressable relays. Built-in Ethernet enables the convenience of control from an RTI XP series control processor via the LAN. An IR input allows the RCM-4 to be triggered from many different sources, including RTI in-wall controllers, control processors or third-party infrared repeater systems. Commands trigger open and close functions as well as adjustable hold times for momentary relay operation. The RCM-4 can be powered from the included power supply or PoE.

Part#: 10-210480-16



Key Features

- Four individually addressable relays.
- Relays capable of switching up to 28VDC@5A.
- Relays can be used in a normally open or normally closed configuration.
- Relays can be controlled with both IR and Ethernet.
- Powered using power supply or class2 PoE (Power over Ethernet).

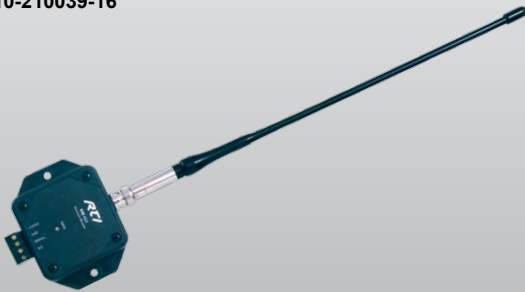
Specifications

| | |
|------------------------------|---|
| Power Supply | +12VDC, 1A |
| Infrared Input | Compatible with industry-standard repeaters and receivers |
| Relays | Four, capable of switching up to 28VDC@5A |
| Ethernet Port | One, RJ-45, 10/100 Base-T with Power-over-Ethernet |
| USB Port | One, Programming |
| Mounting | Wall-mount or free standing |
| Dimensions (W x H x D) | 6.8in(173mm) x 2.9in(74mm) x 1.2in(31mm) |
| Weight | 1.0 lb. (466g) |
| Warranty | One Year (Parts & Labor) |

RM-433 RF Receiver Module

The RM-433 is a radio frequency receiving device for communicating to RTI control systems and operates at 433MHz. The RM-433 contains a microprocessor that monitors all received signals so that RF noise is filtered out. When valid RF data from an RTI remote is detected, the RM-433 passes the signal through its output driver which allows the data to travel long distances over wire. The output driver is compatible with industry standard infrared repeating systems, and can be wired together with those systems or with additional RM-433 units.

Part #: 10-210039-16



Key Features

- Reliable RF reception due to matched antenna, connector, and PCB.
- Modular design that allows multiple RM-433 units to be wired together allowing for nearly any desired coverage area.
- Output signal is compatible with industry standard infrared repeating systems. This allows multiple IR and/or RF receivers to be wired together into an RTI control system.
- No dedicated power supply required. Power is derived directly from the RTI control system.
- A feedback LED confirms operation.

Installation Notes

- A 433 MHz enabled RTI remote and control processor must be used with the RM433.

Specifications

| | |
|---------------------------------|--|
| Power Requirements | +9VDC to +16VDC @ 60mA |
| RF Carrier Frequency | 433.92 MHz |
| Output Drive | 200mA maximum |
| Operating Temperature | +32°F to +122°F (0°C to +50°C) |
| Operating Humidity | 5% to 95% non-condensing |
| Module Dimensions (HxWxD) | 3.5in (89mm) x 3.4in (86mm) x 1.0in (25mm) |
| Antenna Length | 13 in" (330mm) |
| Weight | 4.4 oz. (125 grams) |

VPS-1 Voltage Sensor Module

The VPS-1 Voltage Power Sensor monitors the on and off status of almost any electronic component and provides this power status information to RTI control systems such as the XP-6 Remote Control Processor. When the attached component is powered on, the VPS-1 detects the voltage supplied from the component, an attached power supply, or a third-party power sensor, and sends a signal to the RTI control system.

Part #: 10-210013-08



Key Features

- Connects to the MPIO ports of RTI control processors (ex. XP-6, XP-8s etc) and expansion modules (ex. PCM-4).
- Detects the on/off status of almost any component.
- No power supply required - Power is supplied by the output ports.
- Power sensing circuit is housed in a compact, rugged ABS enclosure.
- LED light indicates the current power status.
- Control cable can be extended up to 500 feet.

Specifications

| | |
|-----------------------------------|---|
| Output | Compatible with industry standard IR emitters |
| IR Output Drive | 100mA maximum |
| Input Requirements | 3V to 24VDC -or- 9V to 30V P-P AC (50Hz min) |
| Maximum Current Consumption | 0.5mA |
| Control Cable Length | 12 feet (3.7 m) |
| Voltage Sensor Cable Length | 3 feet (.9 m) |
| Dimensions (W x H x D) | 1.75" (44mm) x 3.0" (76mm) x 0.7" (18mm) |
| Warranty | One Year (Parts & Labor) |

vIRsa Mouse IR Emitter

With four multi-purpose output ports and a voltage trigger output (12VDC), the PCM-4 expands the output capabilities of an RTI XP series control processor to accommodate larger projects. Built-in Ethernet allows for convenient control over the local area network (LAN). Each MPIO port provides IR routing capabilities, one-way RS-232 communication* and power sensing.*

* With RTI accessory devices.

Part #: 10-210268-20



Key Features

- Sleek, low-profile and symmetrical design.
- Separate holder allows for easy removal and replacement of emitter.
- Includes two emitter holders (one red, one clear).
- Blue LED flasher can be visible during normal operation or only for troubleshooting.
- Ten foot cable reaches the entire rack - includes cable management strap.
- Flexible film adhesive conforms to curved surfaces.
- Translucent circuit board.
- Industry standard 3.5mm mini-plug uses precision over-molding to ensure consistency.

Specifications

| | |
|----------------------------------|---|
| Output..... | Compatible with industry standard IR repeater systems |
| Infrared Power Requirements..... | 12VDC, 100mA maximum |
| Maximum Current Consumption..... | 30mA |
| Cable Length | 10 feet (3.0 m) |
| Plug type..... | 3.5mm |
| Dimensions (W x H x D) | .4" (10mm) x .5" (13mm) x 0.1" (2.5mm) |
| Warranty | 90 days |

ZBPro 2.4GHz Network Mgmt Tool

The ZB-Pro is a Professional Network Management Tool for use with Remote Technologies Inc. 2.4 GHz Zigbee® networks. It operates in different modes, which are programmed automatically by the specific Integration Designer® function begin used. The ZB-Pro is attached to a standard USB port of a PC and is used for purposes, such as downloading programming and firmware updates into a RTI ZM-24 Transceiver Modules.

Part #: 10-210216-13



Key Features

- Downloads network configuration data into an RTI ZM-24 Transceiver Module.
- Updates the firmware in the RTI ZM-24 Transceiver Module.
- No external power supply is required. Power is derived directly from the USB port.
- Feedback LEDs confirm various operations.
- Compact, rugged design.
- Available only to professional systems integrators.
- Two year parts and labor warranty.

Specifications

| | |
|----------------------------|---|
| Power Requirements..... | Powered directly from USB port |
| RF Carrier Frequency..... | 2.4GHz (Zigbee® technology) |
| Standards | IEEE 802.15.4 |
| Operating Temperature..... | +32°F to +122°F (0°C to +50°C) |
| Operating Humidity..... | 5% to 95% non-condensing |
| Dimensions (HxWxD) | 4.28in (109mm) x 1.37in (35mm) x .65in (17mm) |
| Weight | 1.1 oz. (32 grams) |

ZM-24 2.4GHz Zigbee® Transceiver Module

The ZM-24 2.4GHz Transceiver Module is capable of more than just receiving signals - it can transmit signals as well. This creates a bi-directional communication link between certain RTI control processors and handheld remote controls. The ZM-24 is easy to install, since only one module needs to be hard-wired to the control processor, while additional "repeater" modules can be added by powering them from any electrical outlet within communication range of other modules. The ZM-24 units will then create a self-healing "mesh" network which adapts to changes or problems with the communication path.

Part #: 10-210178-20



Key Features

- Enables bi-directional wireless communication.
- Wireless communication range between ZM-24 modules up to 100 feet.
- Connects to a central processor from up to 1000 feet away using standard Cat-5 cable.
- Can be used in "coordinator" mode, or create a self-healing mesh network by adding modules configured in "repeater" mode.
- Utilizes IEEE802.15.4 wireless Zigbee® communication at 2.4Ghz.
- Easy mounting with adjustable antenna and detachable wall bracket.
- Receives power from an RTI control processor or the included power supply.

Installation Notes

- A 2.4 GHz Zigbee® enabled remote control and processor must be used with this model transceiver. It is not compatible with the 433MHz remote controls.

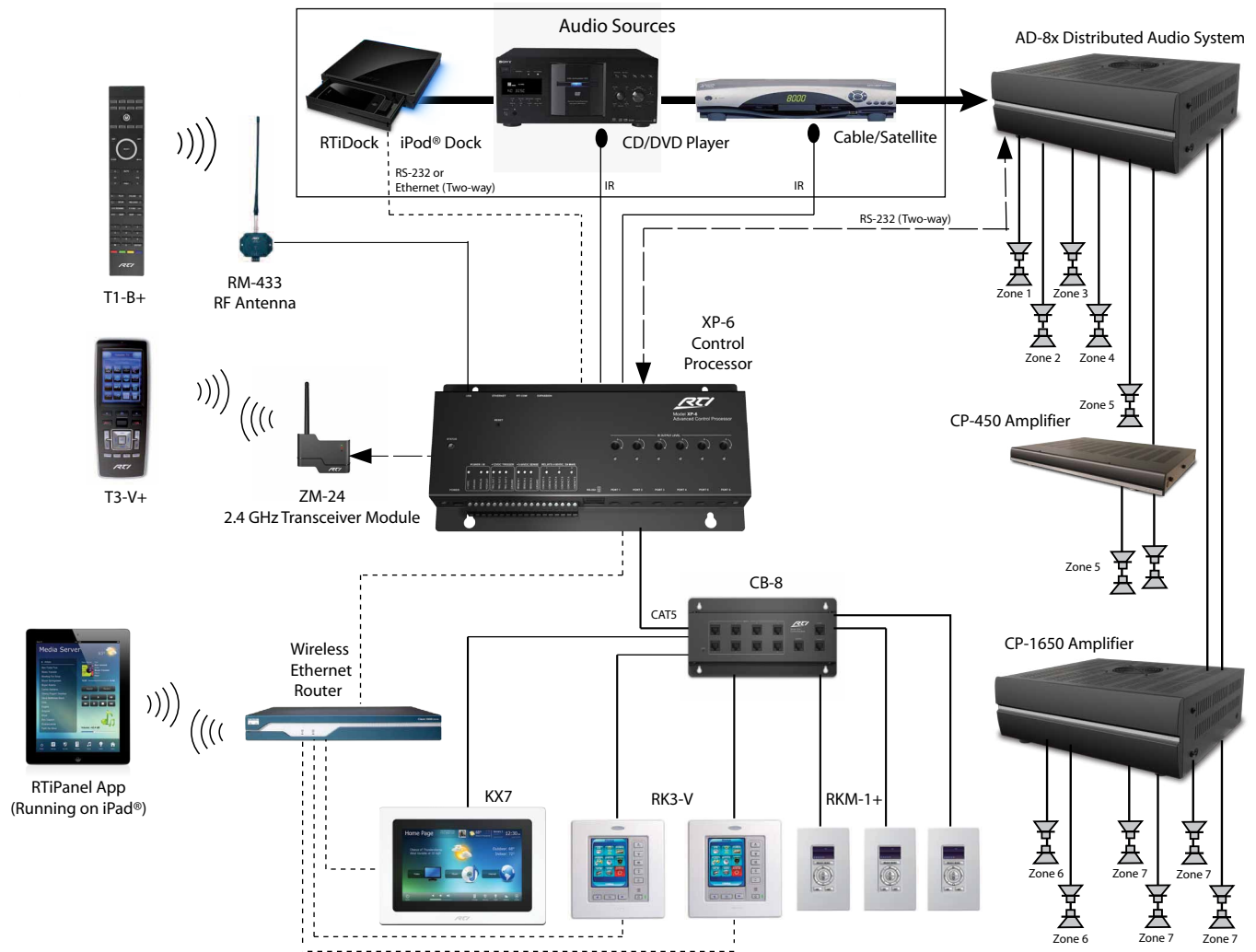
Specifications

| | |
|-------------------------------------|---|
| Power | +9VDC to +16VDC, 60mA |
| RTI Com Port..... | Two-way Zigbee® Communication Port, RJ45 Connection |
| | Drives up to 1000 ft (300 m) of wire |
| Wireless Networking..... | IEEE802.15.4 Zigbee® network compliant |
| RF Frequency Range | 2.4Ghz - 2.5Ghz |
| Operating Temperature..... | +32°F to +122°F (0°C to +50°C) |
| Operating Humidity..... | 5% to 95% Non-condensing |
| Device Capability..... | Total number of devices is limited only by memory |
| Communications..... | OTA (Over-the-air) Programmable |
| Enclosure..... | High-impact molded ABS plastic, black |
| Mounting..... | Detachable bracket |
| Dimensions -Ant. Flat (WxHxD)..... | 3.5" (89mm) x 4.0" (101mm) x 1.1" (28mm) |
| Dimensions -Ant. Ext. (WxHxD) | 3.5" (89mm) x 7.25" (184mm) x 1.1" (28mm) |
| Weight | 4 oz (113g) |
| Warranty | One Year (Parts & Labor) |

RTI System Overview



Application Diagram - Multi-Zone Audio



Multi-zone audio challenges the custom installer with a new set of system design issues that need to be transparent to the end-user. The control system interface must be simple to use and it must blend into the environment.

With a full line of in-wall products, RTI control systems give you the flexibility to meet rigorous control requirements throughout the home or business, while handheld remote controls and the RTiPanel App can be used in locations that cabling cannot reach.

Equipment Considerations

In the case of multi-zone audio control, which controllers are used around the home/office focuses on functionality at the points of control. It becomes important to know if the end-user only needs audio control, or may enjoy the benefits of a unified control method for lighting, HVAC and security as well. Handheld remotes and the RTiPanel app may also be used for zones that may have other equipment being controlled and a weather resistant remote control works well in special circumstances such as a pool area. A more powerful control processor is going to be required in most cases.

Basic System

Remote Controls: T1-B+/T2-Cs+/T2i
In-wall Controllers: RKM-1+/RK1/KX2
Control Processor: XP-6

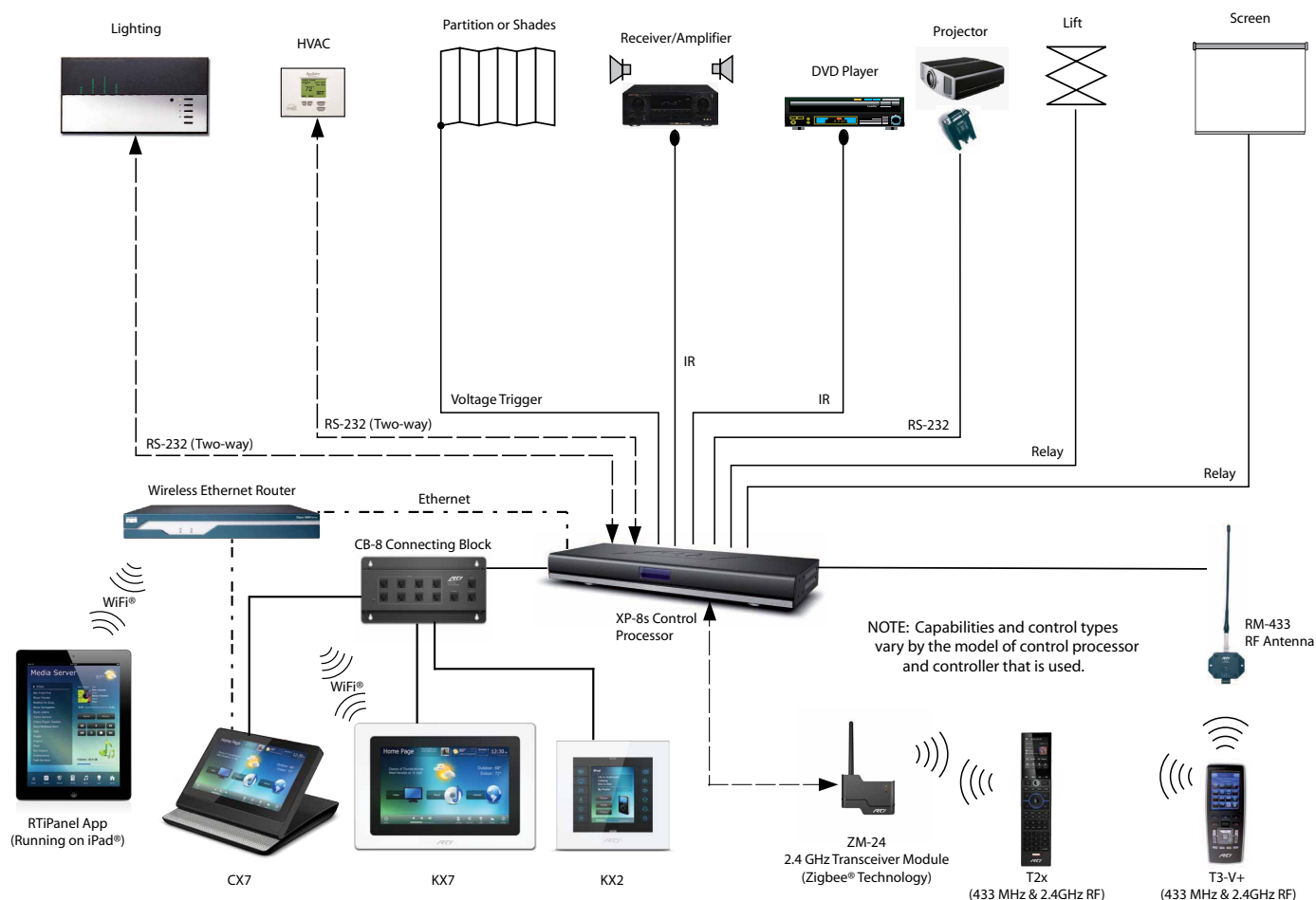
Complex System

Remote Controls: U2/T2x/T3-V+/RTiPanel App
In-wall Controllers: RK3-V/KX7/RK10
Control Processor: XP-6/XP-8s

Distributed Audio

AD-4x/AD-8x
CP-450/CP-1650 Amplifiers
RTiDock iPod Dock

Application Diagram - Conference Room



In the boardroom, time is money and excellence is expected. That's why RTI control systems set the standard for intuitive operation, reliability under pressure, and wide-ranging capabilities. Our technology isn't just a tool you can rely on— it's a business asset you can leverage.

RTI control systems are programmed using Integration Designer® software which offers amazing customization possibilities. This allows the installer to create a simple yet powerful control interface along with the ability to get creative with corporate colors and graphics. In addition, a full line of handheld remote controls with robust RF communication, a line of 2.4GHz Zigbee® remote controls, the RTiPanel and Virtual Panel Apps, and a full line of in-wall products, gives the installer all the tools necessary to offer reliable control in nearly any environment.

Equipment Considerations

In many cases, it is the equipment being controlled that will affect which control processor is chosen. Requirements such as the need for IR routing, RS-232 control or relay controlled devices mean a more powerful processor is going to be needed.

Basic System

Remote Controls: T1-B+/T2-Cs+/T2x
In-wall Controllers: RK1/KX2
Control Processor: RP-4/XP-3/XP-6

Complex System

Remote Controls: T2i/T2x/T3-V+/RTiPanel App
In-wall Controllers: RK3-V/KX7/RK10
Control Processor: XP-6/XP-8s

The product specifications, designs and prices listed in this price book are subject to change without notice. This price book is confidential and is not to be released to any third party outside the RTI Authorized Dealer Network without the express written consent of RTI. Unauthorized release of this price book is considered a violation of trade secret laws and may lead to legal action.

Copyright ©2013
Remote Technologies Inc. USA
All rights reserved
Ver. 201305 - Web