

Experience entertainment's best at home!
SIM2 DOMINO Line



Made in Italy	2
Made by SIM2	3
Innovative vision	4
Worldwide success	5
Clear and positive values	6
SIM2 Core technologies	8
SIM2 DOMINO Line	14
Sirio	16
Nero	24
Crystal	32
Italian design and color palette	38

Made in Italy

The “Made in Italy” mark represents the production quality, the creativity and the style for which Italy is famous all over the world. For a product to carry such a prestigious mark, it must be truly representative of the very best in Italian design, technology and production values. SIM2 is an Italian company that wears its “Made in Italy” mark with pride. For fifteen years the company has designed and manufactured products that are truly deserving of this world-recognized symbol of excellence. For Italian brands like SIM2, success is built on a tradition and history of designer brands, successful ideas, design and product culture, and Italy’s own inimitable style.

“Made by SIM2”

Standing proud in the home theater and digital cinema landscape, dominated by the multinational giants, is an Italian company recognized as the epitome of excellence: SIM2. A business that has been taking on and overcoming the challenges laid down by the market and new technologies time and again during the last 16 years, earning an outstanding reputation worldwide for the innovation, performance, quality, design and comprehensive coverage of our product range. SIM2 is the reference standard brand for motion picture and visual communication professionals, as well as home theater enthusiasts who demand the best. Every day, we commit our extensive resources and efforts in the pursuit of a single objective: absolute excellence. This is what makes the SIM2 brand synonymous with a level of performance, passion and prestige that no other brand can offer - rewarding you with not only superior viewing quality, but also an improved quality of life.



Innovative vision

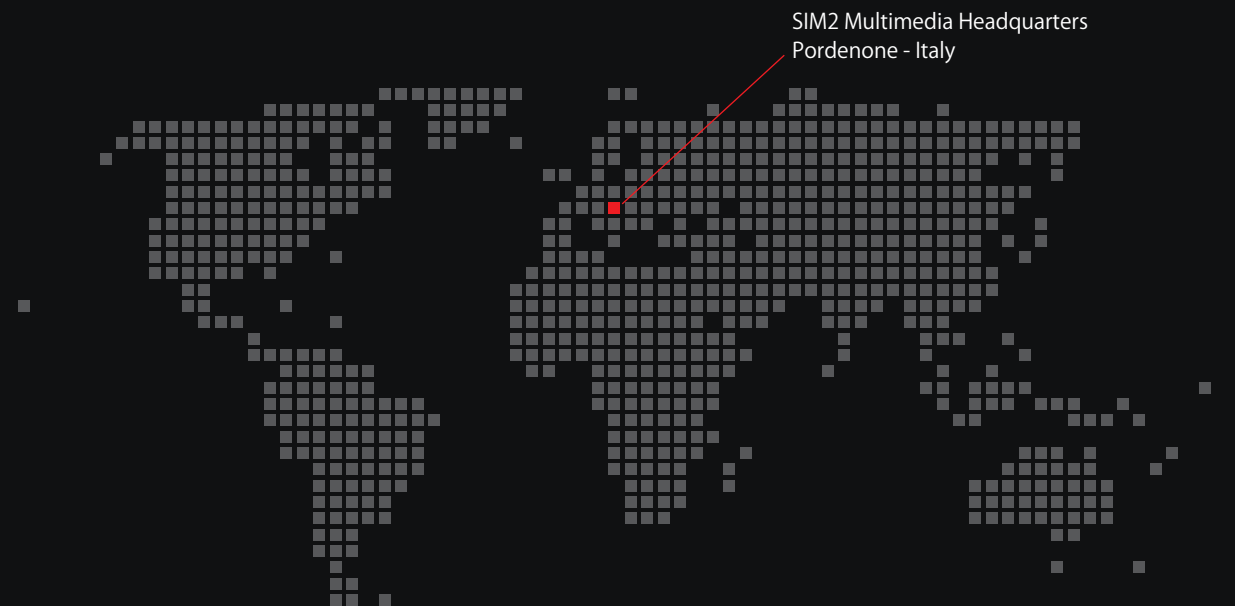
Since 1996, SIM2 has devoted 20% of its human resources and 10% of its turnover to research and development: and the results speak for themselves. Year after year, SIM2 has set new standards in performance and design, with unprecedented innovations and international patents, such as ALPHAPATH™, a masterpiece of precision optics in a compact package, or enhanced DynamicBlack™ technology, which controls black level adjustments with microsecond accuracy, for incredible detail and depth even in the darkest scenes. We are the people who brought DLP® technology into professional movie theaters and homes alike. Used by the Hollywood Studios, this technology from Texas Instruments offers extraordinary image clarity that brings out the smallest details, even in high-speed sequences, delivering exceptional long-lasting performance.

Awards for Excellence: SIM2's commitment to continuous improvement, along with the exceptional content of our products in terms of both technology and design, has earned us international acclaim. Over the course of 15 years, SIM2 has picked up 45 Products of the Year Awards, 34 Reference Product Awards and 40 Best Product Awards from special interest magazines and trade shows.



Worldwide success

Italian style and personality, allied to visions and strategies on a world scale: this sums up SIM2 Multimedia today. From our Pordenone headquarters – located in one of Europe's main industrial districts, just a few miles from Venice – to sales offices in the US, UK, Germany and China, we are a group of companies engaged in five sectors of operation (Home Theater, Command & Control, Professional Venue, Digital Signage and Electronic Cinema), who are now joined by the historic Brionvega brand - one of the greatest protagonists of Italian design and technology. We have a business that spans over 60 countries, either directly or through strategic partnerships with leading distributors, to offer customers the world over the same level of excellence in both products and services.



Clear and positive values

The success enjoyed by SIM2 is also a reflection of its ethical vision based on values that know no boundaries: transparency, responsibility and sustainability. SIM2 technology, quality and design all come together in a positive, healthy and environmentally-conscious workplace. From 1999 to 2008, our Pordenone facility has cut its electricity consumption by 25% and water consumption by 80%: what's more, the plan is to have a photovoltaic system up and running to meet all the company's energy needs. In the meantime, all external lighting is provided by new LED lights, which have been developed and installed by a SIM2 subsidiary (Solight SpA). SIM2's commitment to sustainability starts as early as the research and development stage, with an assessment of the products' environmental impact during the course of their total life cycle (LCA). Our company favors the use of green, recyclable materials and puts all raw materials through certified laboratory testing to rule out harmful substances and reduce the use of potentially pollutant substances, such as lead, mercury, cadmium, chromium, PBB and PBDE. Our company has adopted a "printless" program to reduce paper consumption and organizes regular courses for our personnel on issues related to the environment and sustainability, in collaboration with the University of Padua, one of the most prestigious universities in Europe.



SIM2
Core
technologies

SIM2 ALPHAPATH™ Light Engine

The most critical component in a home cinema front projection unit has always been its light engine. A projector’s image accuracy is governed by the quality of this piece of precision optical engineering. In order to obtain the best projected image quality, a delicate balance is required between the light engine, the DLP® chipset and the control electronics. Building on its heritage of high-end light engine design, SIM2 developed an innovative optical system to re-size the light-path whilst maintaining BOTH its length (necessary for optimum picture control) AND its compactness (required for installation and interior-design constraints). This folded light path, patented and named ALPHAPATH™, is the result of years of SIM2’s advanced R&D optical and thermal analysis.

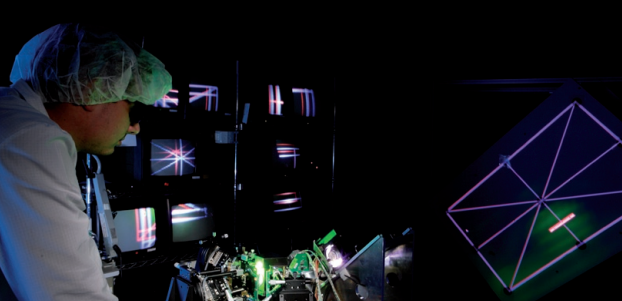
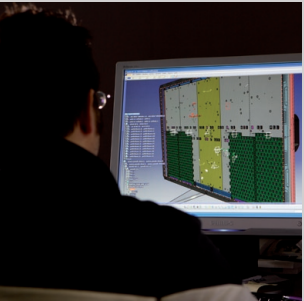
- **Die-cast aluminum body for improved heat management:** a new die-cast aluminum design dramatically improves the thermal management of the light engine, which means SIM2 projectors are now able to use a more powerful lamp to deliver brighter images on-screen.

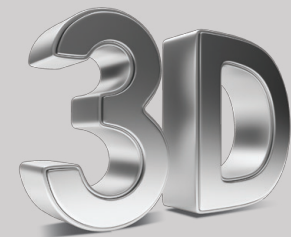
- **Tapered rod-integrator for greater image uniformity:** The purpose of the rod-integrator is to accept the raw light energy from the lamp and convert it into a pure and refined beam of light. It is also where the light spot from the lamp is turned into a precise 16:9 shape before it illuminates the DMD chipset. This new tapered design helps further improve color uniformity and efficiency of light transmission.
- **New Coatings on the color wheel to further enhance color and picture performance.**

SIM2 Unique Implementation of
DynamicBlack™ Technology

The DynamicBlack™ technology, coupled with the world-renowned precision optics of SIM2’s ALPHAPATH™ light engine and the latest DLP® chipsets, delivers enhanced contrast and black level performance. This improved black level enables the projectors to produce images that contain the maximum amount of detail possible in dark scenes without compromising black level or the excellent dynamic range available from DLP® technology. SIM2 has developed a unique solution to achieve this, using three distinct specialized components: enhanced DynamicBlack™ technology, a user-adjustable iris and a new dimmable lamp.

SIM2 optical specialists designed a dynamic iris in a non-symmetric and folded shape powered by an ultrafast step motor (similar to those used in hard disc drives), in order to prevent unwanted stray light from contaminating the purity of the optical light path. DynamicBlack™ automatically adjusts the dynamic iris position, relative to the picture content, with microsecond precision, extending the depth of black level and providing richer detail in dark scenes. This extended dynamic range produces a more life-like, three-dimensional quality to the final image.





3D Technology Overview

It is now unquestionable: the era of 3D has officially started. Today, new technologies allow the delivery of images with a strong emotional impact, where the spectator feels completely immersed and involved. SIM2 has embraced this new technological ‘wager’, and today is among the first in the world to offer a series of products for home use, with characteristics that are the same as those at the cinema. How we perceive in 3D: the simple reason why we perceive in 3D is because we have two forward facing eyes with which we observe the world around us (binocular vision). Our eyes are separated from each other by about 6 cm (3 inches). As a result, one eye perceives a slightly different image to the other eye, a different shifted perspective. The human brain is wired so that it can combine these two different images.

To simulate 3D vision we must therefore ‘trick’ the brain by sending a different image for each eye

(stereoscopy). In other words, in order to see a 3D image, one eye must see a different image than the one seen by the other eye. The brain then ‘recombines’ the information related to these two different images, giving the observer a sense of ‘depth’ and therefore a sense of 3D vision. And DLP® technology provides an image latency time equal to zero, which means perfect 3D images without any annoying crosstalk effect (Ghosting).

•**Active systems** are based on the use of suitably controlled glasses (thereby active) that alternatively block the vision of each eye in quick succession, through the use of shutters. The glasses, which are synchronized with the projector, will view two different images on the screen in a sequential manner (sequential frames), permitting each eye to see only the image dedicated to it.



SIM2’s PureMovie & PureAction

SIM2’s engineers have designed the 3D active system models with three user modes, each optimized for the various demands of movie, sports and 3D viewing:

- **PureMovie (2D):** allows a pure presentation of the signal coming from your source: all but the most basic circuitry is bypassed in order to ensure a more “film-like” viewing experience. SIM2’s PureMovie allows the delivery of the widest contrast ratio and deepest black level performance from the projector.
- **PureAction (2D):** has been specifically designed for fast-motion video material, resulting in smooth motion, free from the ‘smear’ or ‘judder’ that can

affect the image. The PureAction mode is particularly suited to fast-action sports viewing, where the ability to easily follow the action, regardless of its intensity, is paramount.

- **PureAction 3D:** is SIM2’s implementation of the next level in reality reproduction: 3D video visualization. PureAction includes the state-of-the-art of 3D technologies in order to ensure 3D viewing free of flickering, ghosting and motion “shudder” suffered by most 3D displays.

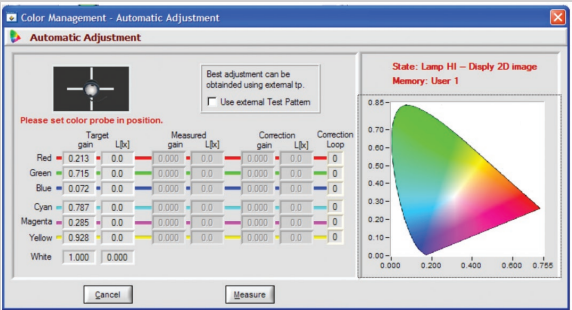
Complete color control

New Live Colors Calibration 2.0 Software

To aid calibration, the SIRIO and NERO projectors feature the new SIM2’s advanced Live Colors Calibration 2.0 software that enables professional calibration of all projection parameters such as complete adjustment of the primary, secondary and white point color coordinates. This PC-based software gives calibration experts unprecedented control over the projector image quality. The image can be further optimized by using one of the four sets of gamma curves available. These can be used to correct for variations in the source material, differing levels of ambient lighting or simply to allow for individual viewing preferences.

LCC2 New Features:

- 2 memories per 2D/3D mode – Total of four
- Target gamut and white point information
- Color probe feedback from X-rite Hubble
- Automatic colors adjustments with feedback from color probe X-rite Hubble
 - Auto-Adj. Coordinate x,y
 - Auto-Adj. Gains
- Projector status alignment
- Native projector colors measure and update
- Available commands to pre-adjusting projector image (bright., contrast and gamma)
- 2 user gamma customization for 2D/3D mode
- More powerful color management panels



SIM2 DOMINO Line

Experience
entertainment's
best at home!

Today's home entertainment systems demand that a projector be capable of producing high quality images from any and all video devices and in a variety of room lighting levels. Sharing many of the technical attributes of the Grand Cinema® LUMIS 3-chip series, DOMINO is a projector line that offers consumers a choice of 5 models - Sirio, Nero, and Crystal - that meet such requirements and enhance the viewing experience. Based on single-chip Full HD DLP® technology, SIM2's DOMINO offers different levels of performance and feature sets that include (depending on model) high brightness, high contrast, precise and accurate color reproduction, deep black level, artefact-free motion and the ability to convey the extended depth of 3D images.

TYPICAL APPLICATIONS

SIRIO: Medium/large media rooms and family/games room with ambient light

NERO: Small/medium home theater with controlled ambient light

CRYSTAL: Small/medium media rooms and family/game rooms with moderate ambient light.

Key Points(*)

- High quality images from any and all video devices and in a variety of room lighting levels
- High performance 1-chip 1080p projectors
- 3D features
- Advanced processing electronics for flicker-free 3D viewing (120 Hz)
- PureMovie and PureAction 2D/3D technology
- BrilliantColor™ and DynamicBlack™ Technologies
- Bright, colorful images with high contrast ratio
- Configurability of optical components: choice of color wheels, brightness and lenses
- Comprehensive choice of inputs

(*) Depending on model. Please check model description and Technical Specs sheet for detailed characteristics.



SIRIO Models

The power of brightness

This new 1-chip 3D DLP® projector is designed for use in home entertainment systems where the demand for high light output is mandatory. SIM2's SIRIO delivers images with both very high brightness (up to 6,000 ANSI lumens) and high contrast (up to 6000:1).

SIRIO is available with a choice of two different SIM2 color wheel options, namely SIM2Color and SIM2Shine, each designed to offer optimal performance in color and/or brightness.

An extensive array of connection possibilities is available with the SIRIO, including: HDMI 1.4 and LAN inputs. Systems integration is another of the SIRIO strengths; it will integrate seamlessly into any room thanks to a choice of 5 lenses available.

TYPICAL APPLICATIONS

Medium/large media rooms and home theater with controlled lighting.

Key Points:

- 1-chip Full HD (1080p) DLP®-based home theater projector
- 3D features ^(*)
- DynamicBlack™ technology
- BrilliantColor™ technology
- 2x350W UHP lamps
- High Brightness up to 6,000 Lumens^(**)
- Choice of 2 color wheels: SIM2Color and SIM2Shine.
- High contrast ratio up to >6000:1
- PureMovie 2D and PureAction 2D/3D technologies
- Choice of 5 lenses available
- Comprehensive choice of inputs, including HDMI 1.4 with DeepColor and LAN (RJ45)

^(*) A SIM2 3D emitter and glasses pack is required to initiate 3D feature (sold separately)

^(**) Depending on type of color wheel



Champion of light and color

SIRIO

Created for the most demanding home entertainment system, SIRIO brings a balanced approach to high brightness projection, with a quality of picture that rivals that of the best projectors in its category.

Designed to be used with large screen sizes or in ambient light room conditions, where high light output is a necessity, SIRIO uses light-tuned optical elements to maximize light output (up to 6,000 ANSI lumens) from its dual 350W lamps.

This is a star performer that has the power and clarity to satisfy the most demanding viewer (whether watching movies or playing videogames), as well as the ability to deliver bright, contrast-rich images in real world lighting conditions.

SIM2 has, in the SIRIO, created a 3D™ active single-chip DLP®-based projector without the compromises that are usually found in high brightness projectors, where high light output comes at the cost of some important features. SIRIO has a balanced delivery of both high brightness and healthy contrast.

SIRIO is available with a choice of two different SIM2 color wheel options, namely SIM2Color and SIM2Shine. Each wheel has been designed to offer optimal performance in specific applications:

- SIM2color - The perfect choice for depth of color and gamut flexibility;
- SIM2shine - The perfect choice where high brightness is a prerequisite.

SIM2's SIRIO sports PureMovie, PureAction, and PureAction 3D user modes - each optimized for the various demands of movie, sports and 3D viewing – and SIM2's advanced Live Colors Calibration 2.0 software that enables complete adjustment of the primary, secondary and white point color coordinates of the projector.

The SIRIO has a comprehensive choice of connection options on-board an RJ-45 connector (Ethernet or LAN) and a USB port hosting a dedicated USB-Wireless adapter. These control ports allow

- easy integration with Home Automation control systems (such as Crestron or AMX) that use IP addressable control.
- Projector control by IP and
- remote monitoring and serviceability – Through a dedicated IP address and a port, service centers can connect with the projector, which will in-turn communicate back a parameter list (i.e. Serial Number, Firmware version, Lamp hours used, selected input and resolution, image settings



Champion of light and color

SIRIO

etc.). The service center will have the capability to evaluate a reported issue with the projector and make the necessary adjustments (where possible) to rectify the issue – remotely.

SIRIO also utilizes full 10-bit video processing, with high-definition scaling and de-interlacing capabilities, to create the highest quality video images from all sources (including 3D).

For ease of installation, the projector sports the supreme flexibility of five, high quality glass lens options, making it possible to project an immaculate image on a big screen: one short fixed lens (0.77:1) and four long throw ratio lenses (ranging from 1.21 to 6.97:1).

The SIRIO is available in a striking matte black finish, the same as that used in the luxury automotive industry.

^(*) A SIM2 3D emitter and glasses pack is required to initiate 3D feature (sold separately)



SIM2’s SIRIO Key technical specifications

DISPLAY

Technology: 1 x chip DMD

Resolution: Full-HD - 1920 x 1080 pixels

Light source: 2 x 350W UHP lamp

3D features^(*)

SIM2’s PureAction 2D/3D technology

SIM2’s PureMovie 2D technology

SIM2 DynamicBlack™ Technology enhanced solution

BrilliantColor™ Technology

Color Wheel options: SIM2Color; SIM2Shine

Contrast ratio (Full ON/ Full OFF): >6,000:1

Brightness⁽¹⁾:

- up to 4,500 Ansi Lumens (with SIM2Color);

- up to 6,000 Ansi Lumens (with SIM2 Shine)

INSTALLATION

Standard Lens (throw ratio): 1.45-1.93:1

Lens Options (throw ratio):

0.77:1; 1.21-1.45:1; 1.93-3.67:1; 3.67-6.97:1

Optical shift: Motorized with memory, Vertical up to +60%, down -20% max. from screen center (based on image height), horizontal +/-10%

Digital Keystone: Vertical

Picture size (inches diagonal): 50-300

Aspect ratio: 4:3, 16:9, Anamorphic, Letterbox,

Panoramic, pixel-to-pixel, subtitle + 3 custom-user adjustments

ELECTRONICS AND CONNECTIVITY

Horizontal & Vertical scan freq.: 15-80 kHz/48-120

Hz

Color System: PAL (B,G,H,I,M,N,60); SECAM; NTSC

3.58; NTSC 4.43

PC graphic standards: VGA, SVGA, XGA,SXGA, UXGA, WUXGA

SDTV: 480i/p, 576i/p,

HDTV: 720p 50/60, 1080i 50/60, 1080p 24/50/60 + 576p

Color Space selection: HDTV - EBU - SMPTE-C

Color Temperature: D65 - D75 - High - Low - Medium - User

Inputs/outputs: 2x HDMI (v.1.4 with Deep Color),

1x Composite Video, 1x Graphic RGBHV,

1x RS-232, 1x USB (A type) socket for USB to Wi-Fi

Adapter, LAN (RJ45 ethernet port), 3D Sync Out, 3x

12V 100mA output

^(*) A SIM2 3D emitter and glasses pack is required to initiate 3D feature (sold separately)

⁽¹⁾ ANSI Lumens specification: This is the typical projector brightness specification found in most sales literature. This measurement allows for direct comparison with other manufacturer’s projectors. Measurements are taken in a totally dark test room with brand new lamp at full power, lamp’s native white color temperature, internal test pattern (full white) and in compliance with ANSI IT7.228-1997 specification.

GENERAL AND ACCESSORIES

Software control: upgradable via RS-232 serial interface, USB or LAN

Power supply: 100-240 VAC +/-10% (48/62 Hz)

Projector weight: 28 Kg. (62 lbs)

Projector dimensions (WxHxD): 464 x 241 x 564 mm (18.3” x 9.5” x 22.2”)

Installation and user manual, AC power cords (2m-6.6 ft); backlit remote control and batteries;

RS-232 adapter cable; USB Wi-Fi adapter

Live Colors Calibration software 2.0 (BluRay)

SIM2 VISUS Active glasses and IR emitter (optional)

Ceiling bracket (optional)



Due to constant product development, specifications are subject to change without notice.

SIM2's NERO models have the power and precision required for the demanding criteria of today's specialist projection applications: precise and accurate color reproduction, deep black level, artefact-free motion and the ability to convey the extended depth of 3D images.

Nero Series

Power,
precision and
innovation

TYPICAL APPLICATIONS

Small/medium home theater with controlled lighting.

Key Points:

- 1-chip Full HD (1080p) DLP®-based home theater projector
- Patented ALPHAPATH™ compact Die-Cast light engine with precision glass optics
- 3D features ^(*)
- PureMovie 2D and PureAction 2D/3D technology
- BrilliantColor™ technology
- 280W dimmable lamp
- High contrast ratio and brightness
- Comprehensive choice of inputs, including HDMI 1.4 with DeepColor
- Choice of two models

^(*) A SIM2 3D emitter and glasses pack is required to initiate this feature (sold separately).



In the NERO, SIM2's renowned product development team has created a projector line with the color accuracy and image clarity normally only associated with larger and more costly projectors, which is quite an achievement. That such a compact chassis can generate the image quality of these larger projectors is very impressive; that it also outperforms many of them, in terms of color rendition and contrast ratio, is quite exceptional. NERO has the perfect balance of power, precision and innovation.

SIM2 has taken the same high quality optics and electronics from our renowned 3-Chip LUMIS 3D-S line to create a state-of-the-art the single-chip DLP projector series. Partnering the latest DLP® chipset with SIM2's new ALPHAPATH™ light engine - with its precision glass optics - produces images with excellent clarity and realism. The NERO line has a powerful 280W lamp, which delivers up to 2000 ANSI lumens on-screen and a contrast ratio of up to 30,000:1.

The NERO line is designed for use in small/medium reference Home Theaters with controlled ambient light – in both 2D and 3D*.

The NERO line has been endowed with three user modes, each optimized for the varying demands of sports and 3D viewing: PureMovie, PureAction and PureAction 3D (120 Hz).

SIM2's NERO projectors utilize SIM2 active 3D technology, with advanced processing electronics to ensure that your 3D viewing is free from the flickering, ghosting and motion 'shudder' suffered by most 3D displays to bring the real cinema 3D experience into your home.

For ease of installation, a choice of three high-quality glass lenses (T1, T2 & T3) is available for the NERO line, giving the projectors a total throw ratio of 1.37-3.9:1. To aid calibration SIM2's Live Colors Calibration 2.0 software allows complete control over primary, secondary and white point color coordinates in both 2D and 3D, enabling calibration experts to accurately calibrate the final image on-screen via a user-friendly PC-based interface.

Taking styling cues from the LUMIS series, the NERO line sports an elegant Giorgio Revoldini designed cabinet in a contemporary soft-touch black finish.

Groundbreaking technology in a compact form factor, room-friendly and desirable, the NERO series has it all.

(*) A SIM2 3D emitter and glasses pack is required to initiate this feature (sold separately).



Nero 3D-1 Nero 3D-2

Nero 3D-1

Compact and commanding, NERO 3D-1 shares much of the technology from SIM2's award-winning LUMIS 3-chip series to bring a world of entertainment into your living room. NERO 3D-1 is compatible with all of today's video sources, including 3D^(*). A choice of three lenses along with PureMovie, PureAction 2D and PureAction 3D user modes make NERO 3D-1 a very versatile projector. The NERO 3D-1 utilizes DarkChip 1080p (1920 x 1080 pixel resolution) and SIM2's patented ALPHAPATH™ optical light engine in its design; this combination of digital micro-mirror device and precision glass optics produces images of excellent clarity and color accuracy. A powerful 280W lamp provides up to 1600 lumens of light output and a native contrast ratio of >10,000:1.

Nero 3D-2

The sleek black cabinet exudes quality, whilst the technology within exceeds expectation. Its compact size and curvaceous good looks make NERO 3D-2 very room-friendly. Bright, colorful images with a level of clarity to rival the best movie theaters are all made possible thanks to SIM2's patented optical light engine and advanced processing electronics. The NERO 3D-2 adds DynamicBlack™ to an already impressive list of features found in the NERO 3D1. This additional feature improves black level performance and contrast ratio (up to 30,000:1 with Dynamic Black in 2D mode), making shadow detail and picture dynamics look even more realistic. The NERO 3D-2 sets new standards for single-chip DLP® projection, with PureMovie and PureAction user modes optimized for 2D and 3D^(*) viewing.

^(*) A SIM2 3D emitter and glasses pack is required to initiate this feature (sold separately).



SIM2’s NERO Key technical specifications

DISPLAY

Technology: 1 x 0,95”chip DMDs
Resolution: Full-HD - 1920 x 1080 pixels
Light source: 280W UHP lamp
3D features ^(*)
SIM2’s PureAction 2D/3D technology
SIM2’s PureMovie 2D technology
SIM2 DynamicBlack™ Technology enhanced solution (NERO 3D-2 only)
BrilliantColor™ Technology
Contrast ratio (Full ON/ Full OFF): >10,000:1 (NERO 3D-1); up to >30,000:1 with DynamicBlack™ (NERO 3D-2 in 2D mode)
Brightness ⁽¹⁾ : 1,600 Ansi Lumens (NERO 3D-1); 2000 Ansi Lumens (NERO 3D-2)

INSTALLATION

Lens Options (throw ratio): 1.37-1.66:1 (type T1); 182.-2.48 (type T2); 2.6-3.9 (type T3)
Optical shift: Vertical up to +50%, down -10% max from screen center (based on image height)
Digital Keystone: Vertical +/-18 degree
Picture size (inches diagonal): 50-250
Aspect ratio: 4:3, 16:9, Anamorphic, Letterbox, Panoramic, pixel-to-pixel, subtitle + 3 custom-user adjustments

ELECTRONICS AND CONNECTIVITY

Horizontal & Vertical scan freq.: 15-80 kHz/48-120 Hz
Color System: PAL (B,G,H,I,M,N,60); SECAM; NTSC 3.58; NTSC 4.43
PC graphic standards: VGA, SVGA, XGA,SXGA, UXGA, WUXGA
SDTV: 480i/p, 576i/p,
HDTV: 720p 50/60, 1080i 50/60, 1080p 24/50/60 + 576p
Color Space selection: HDTV - EBU - SMPTE-C
Color Temperature: D65 - D75 - High - Low - Medium - User
Inputs/outputs: 2x HDMI (v.1.4 with Deep Color), 1x Composite Video, 1x Graphic RGBHV, 1x Component - YCbCr/RGBs, 1x RS-232, 1x USB (B type), 3D Sync Out, 3x 12V 100mA output

^(*) A SIM2 3D emitter and glasses pack is required to initiate this feature (sold separately).

⁽¹⁾ ANSI Lumens specification: This is the typical projector brightness specification found in most sales literature. This measurement allows for direct comparison with other manufacturer’s projectors. Measurements are taken in a totally dark test room with brand new lamp at full power, lamp’s native white color temperature, internal test pattern (full white) and in compliance with ANSI IT7.228-1997 specification.

GENERAL AND ACCESSORIES

Software control: upgradable via RS-232 serial interface or USB
Power supply: 100-240 VAC +/-10% (48/62 Hz)
Projector weight: 11 kg. / 24.3 lb
Projector dimensions (WxHxD): 458 x 210 x 455 mm (18” x 8.3” x 17.9”)
Installation and user manual, AC power cords (2m-6.6 ft); backlit remote control and batteries
Live Colors Calibration software 2.0 (BluRay + USB flash drive)
SIM2 VISUS Active glasses and IR emitter (optional)
Ceiling bracket (optional)
Anamorphic lens systems - static or motorized (optional)



Due to constant product development, specifications are subject to change without notice.

Crystal Line

It has long been acknowledged that projectors offer the best movie-watching experience in the home, and now, thanks to SIM2's CRYSTAL line, one can enjoy this life-size image quality without compromising on style.

The CRYSTAL line features a typically stylish 'made-in-Italy' design: pure technology wrapped in a distinctive, contemporary cabinet. The contoured lateral casing provides the necessary thermal dispersion for the projector. This is a discreet, modern design enriched by a luxurious glass-accented finish and a backlit graphic feature.

Bright enough to light up a big screen and discreet enough to be displayed in your living space, the CRYSTAL line is that perfect combination of compact

size and high performance. Full HD movies, sports and games take on a whole new presence, when compared to a more conventional flat panel TV product. The CRYSTAL line also enables standard definition sources to be reproduced at 1080p resolution, thanks to sophisticated SIM2 Cinema video processing electronics.

The CRYSTAL line is ideally suited to small/medium media rooms and family/game rooms with moderate ambient light.

Key points:

- 2 models available
- 1-chip Full HD (1080p) DLP®-based home theater projector
- BrilliantColor™ Technology
- DynamicBlack™ Technology
- SIM2 Advanced Lamp Technology
- SIM2 Cinema Video Processing
- Contrast ratio (Full ON/ Full OFF) up to >50,000:1 with DynamicBlack™ (Crystal 45)
- Brightness up to 3000 Ansi Lumens (Crystal 45)
- Matte black/white cabinet design with crystal glass accents

TYPICAL APPLICATIONS

Small/medium media rooms and home theater with moderate lighting.



**Stand out
from the crowd**

**Crystal 35
Crystal 45 (*)**

The CRYSTAL line consists of two models: CRYSTAL 35 and CRYSTAL 45. Both share the same design aesthetics, but differ in terms of light output and contrast ratio. CRYSTAL 45 utilizes a reference version of the CRYSTAL light engine with select optics plus enhanced processing electronics to achieve this improved performance. DLP® is the picture technology of choice for the CRYSTAL 35/45; a Full HD1080p (1920 x 1080 pixel resolution) chipset is used in its design, combining this with DynamicBlack™ contrast-enhancing technology. The CRYSTAL projectors are able to deliver crisp, clear images without the motion-blur associated with other picture technologies. SIM2 has utilized advanced lamp technology in the design of the CRYSTAL 35/45 to further optimize the image performance of these DLP®-based projectors. The electronics used in this system control the UHP lamp by way of a two-pulse system: one bright pulse and one dark pulse. The dark pulse enhances contrast, while the bright pulse improves brightness. The resulting image fills the screen with vibrant colors, deep blacks and bright whites.

The CRYSTAL projectors are unlike any other projector on the market; their compact size, distinctive cabinet design and assured image performance mean that they will very soon become the centerpiece of your home entertainment system. The CRYSTAL 35/45 are compatible with all video standards (including 1080p@24fps) and offers a wide choice of both analog and digital source inputs, including HDCP compliant HDMI, making it eminently suitable for use with today's HD devices.

Flexibility of placement of these projectors is made easier with a generous lens throw ratio of 1.62~2.43:1 and vertical lens shift adjustment, while the 280W lamp has the power to light up a big screen even in moderate ambient light.

Available in gloss black or gloss white with crystal-glass accents.

(*) CRYSTAL 45 may not be available in your market. Please check with a SIM2 representative.



Key technical specifications

DISPLAY

Technology: 1 x chip DMD 1080p

Resolution: Full-HD - 1920 x 1080 pixels

Light source: 280W UHP lamp

SIM2 DynamicBlack™ Technology enhanced solution

BrilliantColor™ technology

Contrast ratio (Full ON/ Full OFF) with Dynamic-Black™:

- up to >30,000:1 (CRYSTAL 35)

- up to >50,000:1 (CRYSTAL 45)

Brightness ⁽¹⁾:

- up to 3,000 Ansi Lumens (CRYSTAL 45);

- up to 2,500 Ansi Lumens (CRYSTAL 35)

INSTALLATION

Throw Ratio: 1.62 – 2.43:1

Manual Optical Shift, vertical

Picture size (inches diagonal): 50-300

Aspect ratio: 4:3, 16:9, Anamorphic, Letterbox,

Panoramic, pixel-to-pixel, subtitle + 3 custom-user adjustments

ELECTRONICS AND CONNECTIVITY

Horizontal & Vertical scan freq.: 31-92 kHz / 48-85

Hz; 24 HZ (1080p only)

Color System: PAL (B,G,H,I,M,N,60); SECAM; NTSC 3.58; NTSC 4.43

PC graphic standards: VGA, SVGA, XGA, SXGA, UXGA, WUXGA

SDTV: 480i/p, 576i/p,

HDTV: 720p 50/60, 1080i 50/60, 1080p 24/50/60 + 576p

Color Space selection: HDTV - EBU - SMPTE-C

Color Temperature: D65 - D75 - High - Low - Medium - User

Inputs/outputs: 2x HDMI (v.1.4 with Deep Color), 1x Composite Video, 1x S-Video, 1x (shared)

Graphic RGBHV, 1x RS-232, 1x USB (B type), 1x 12V 100mA output

⁽¹⁾ ANSI Lumens specification: This is the typical projector brightness specification found in most sales literature. This measurement allows for direct comparison with other manufacturer's projectors. Measurements are taken in a totally dark test room with brand new lamp at full power, lamp's native white color temperature, internal test pattern (full white) and in compliance with ANSI IT7.228-1997 specification.

GENERAL AND ACCESSORIES

Software control: upgradable via RS-232 serial interface or USB

Power supply: 100-240 VAC +/-10% (48/62 Hz)

Projector weight: 12 kg. / 26.5 lb

Projector dimensions (WxHxD):

364 x 167 x 450 mm (14.3" x 6.6" x 17.7")

Installation and user manual, AC power cords (2m-6.6 ft); 2x backlit remote control and batteries

RS-232 adapter cable

Ceiling bracket (optional)

Anamorphic lens systems - static or motorized (optional)



Due to constant product development, specifications are subject to change without notice.

Italian design and color palette

For many, the cabinet design of a product is almost as important as its performance, particularly when it will be placed in the middle of a living room. The SIM2 products are elegance exemplified; these are projectors that deserve to be placed on full view. They feature contemporary cabinet designs by Giorgio Revoldini to create the perfect combination of form and function.



Soft-touch Matte Black finish

Matte White finish with crystal accents

Matte Black finish with crystal accents

Domino line color palette

SIRIO



SIRIO
Standard color:
soft-touch matte black finish

Nero



3D-1
Standard color:
soft-touch matte black finish



3D-2
Standard color:
soft-touch matte black finish

Crystal



35
Standard color
matte black or white finish with
crystal accents



45
Standard color
matte black or white finish with
crystal accents

Product aesthetic designer Giorgio Revoldini

Concept and art direction AdasPn&Associati

Photo

Alessandro Bon

SIM2 Archive (Euro Rotelli - Alan Gelati)

Luciano Gaudenzio (nature)

Paper (FSC - Forest Stewardship Council)

Due to constant product development, specifications and design might be subjedct to change without notice.
SIM2 Domino Series catalog - ROW - July 2012

HEADQUARTERS:

SIM2 MULTIMEDIA S.p.A.
Viale Lino Zanussi 11
33170 Pordenone - Italy
Tel. +39.0434.383259
Fax. +39.0434.383260
info@sim2.it
www.sim2.com

USA:

SIM2 USA Inc.
10108 USA Today Way
Miramar, FL 33025
Tel. +1.954.442.2999
Fax. +1.954.442.2998
sales@sim2usa.com
www.sim2usa.com

UK:

SIM2 UK Ltd.
Steinway House, Worth Farm,
Little Horsted, Nr. Uckfield
East Sussex TN22 5TT
Tel. +44.(0)1825.750850
Fax. +44.(0)1825.750851
info@sim2.co.uk
www.sim2.co.uk

CHINA:

SIM2 BRIONVEGA Co. Ltd.
Room 302-303, No. 244
Liaoning Road,
200080 Shanghai, P.R.C.
Tel./Fax. +86.21.62881991
infoCHINA@sim2.com
www.sim2.com

F.R. GERMANY

SIM2 DEUTSCHLAND GmbH
Arndstrasse 34-36
60325 Frankfurt am Main
Toll-free numbers:
Tel. 0800.8007462
Fax. 0800.9007462
info@sim2.de
www.sim2.de

